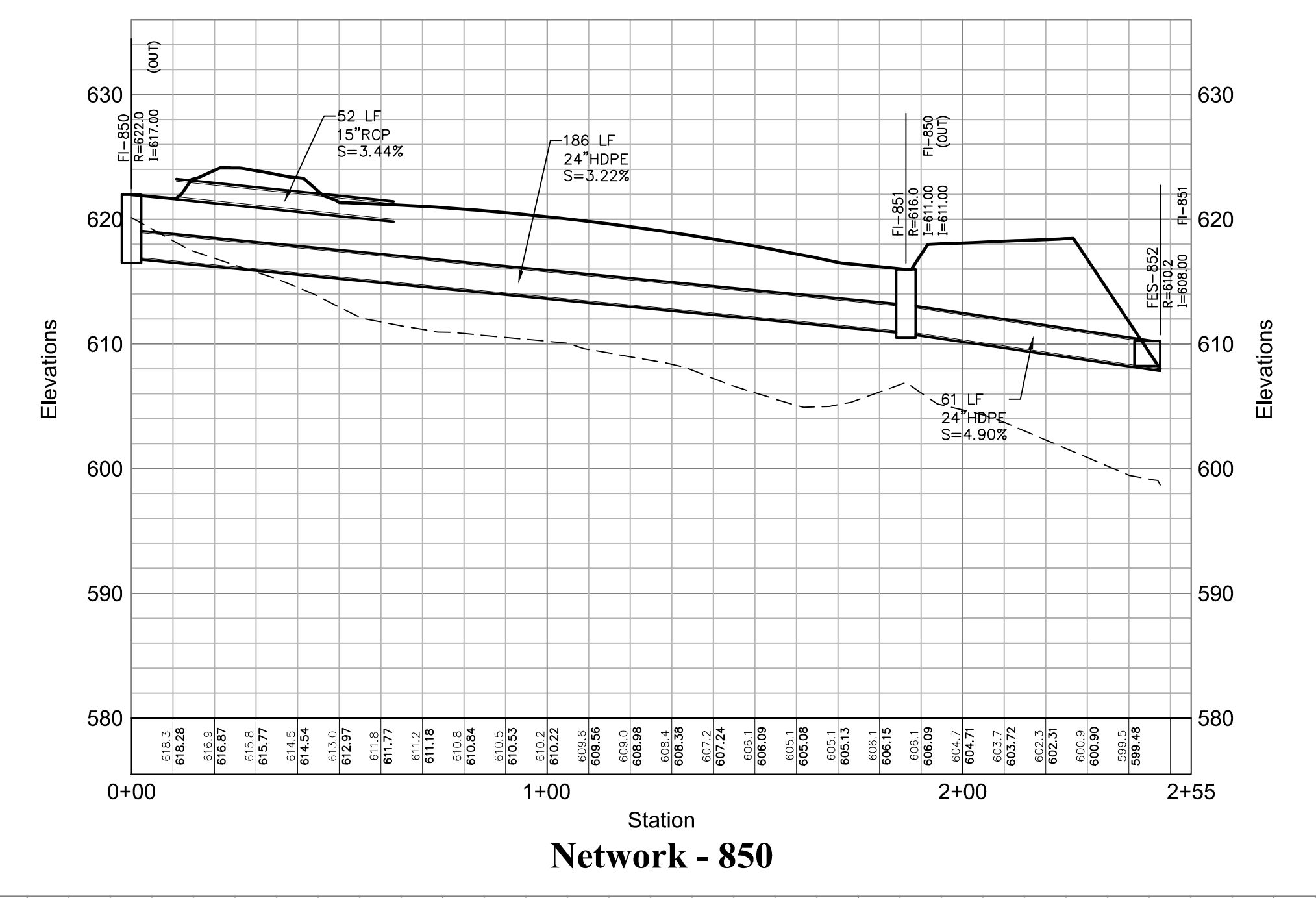


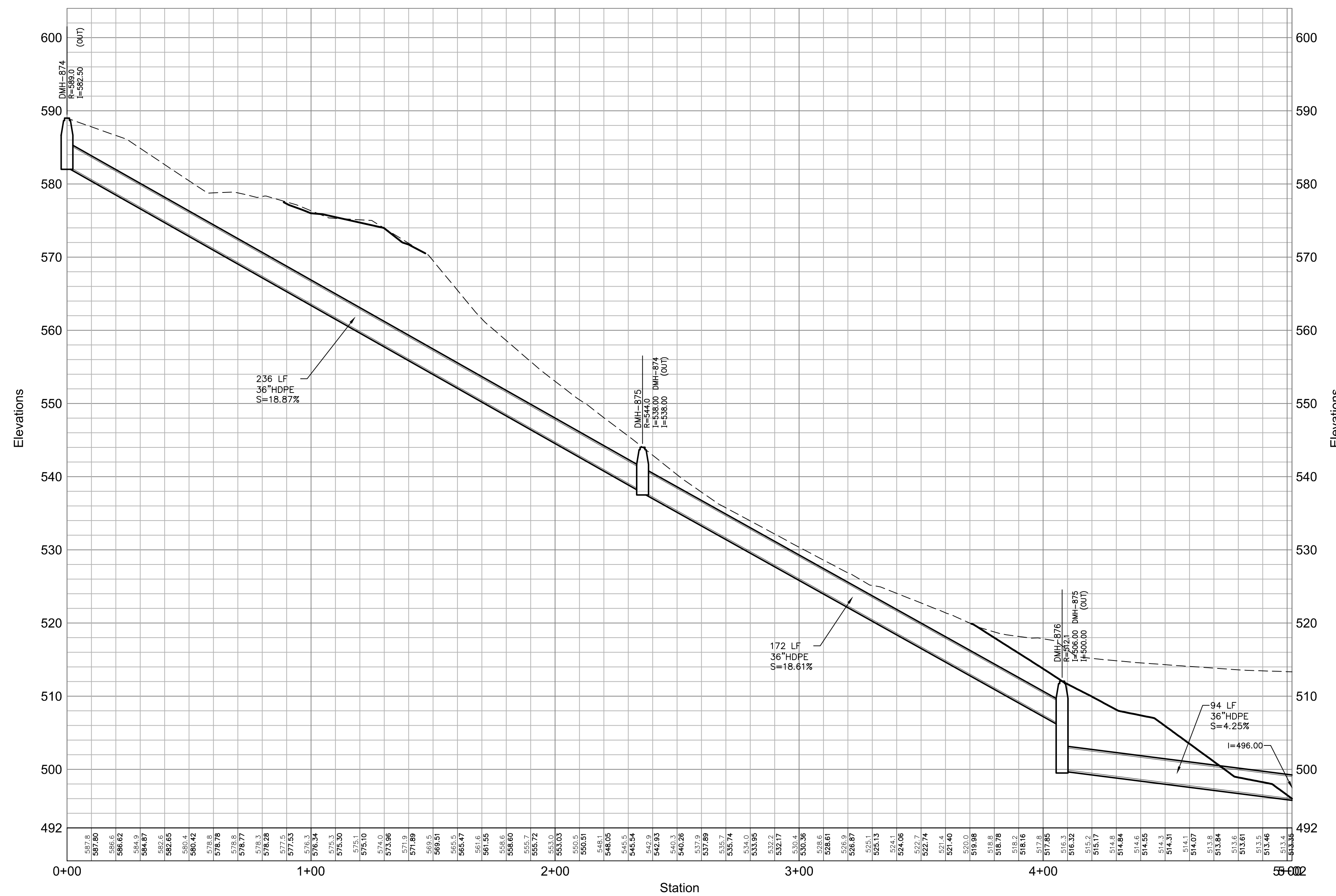
Network - 892



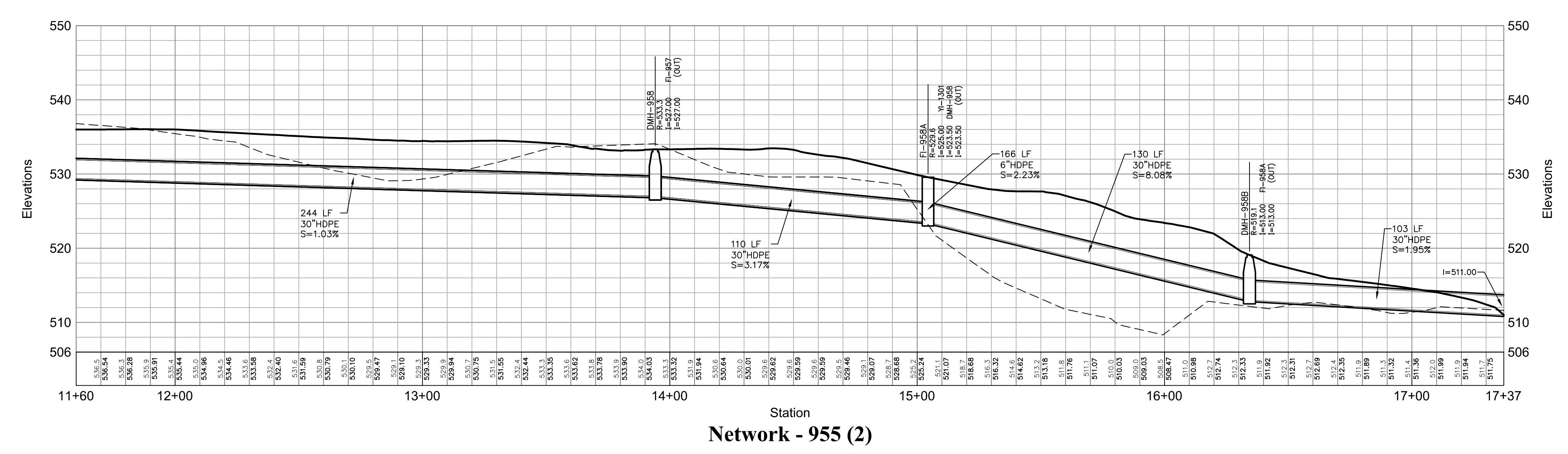
Network - 850



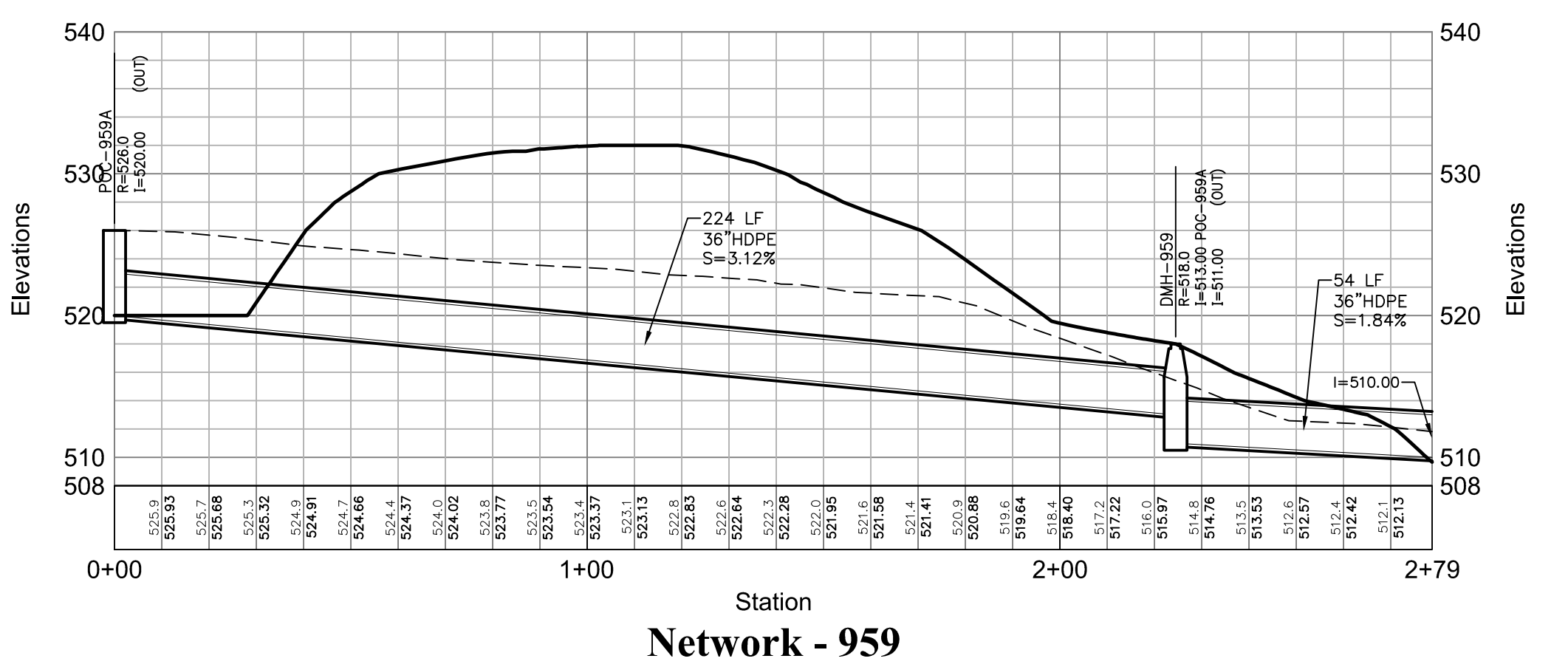
Network - 955 (1)



Network - 874



Network - 955 (2)



Network - 959

**OWNER:**  
**Silo Ridge Ventures, LLC**  
 923 Route 44  
 Amenia, New York 12501  
 845.373.8020

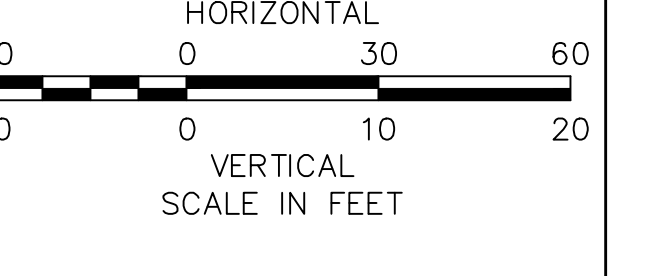
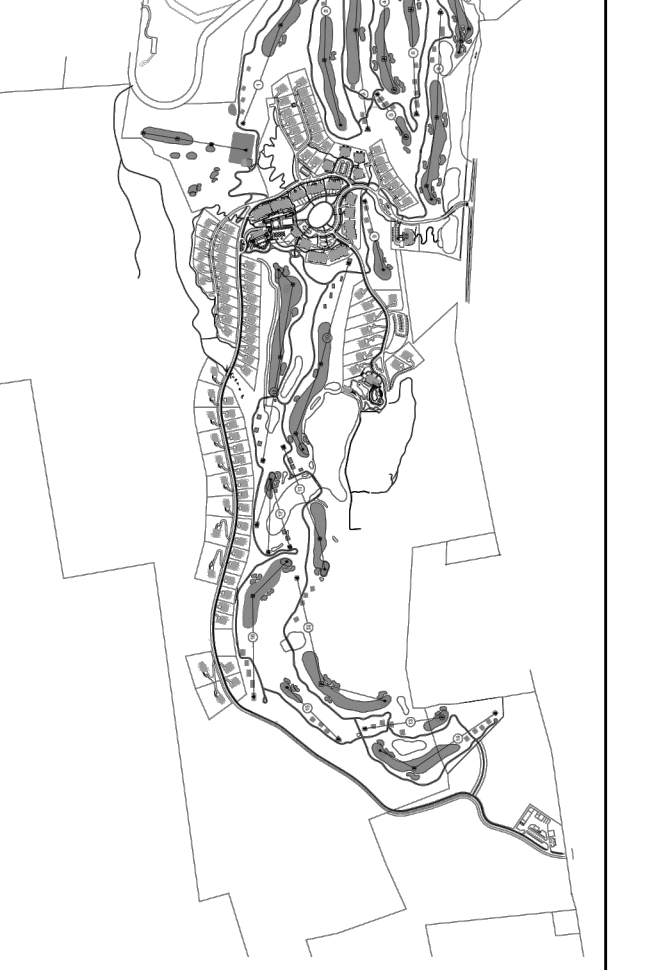
**ARCHITECTS, PLANNERS, LANDSCAPE ARCHITECTS:**  
**HART | HOWERTON**  
 10 East 40th Street New York, NY 10016  
 Tel: 212.683.6331 Fax: 212.461.3768  
 E-mail: NY@hart-howerton.com

**GOLF COURSE DESIGNERS:**  
**FAZIO DESIGN**  
 401 N. Main St., Ste. 400  
 Hendersonville, North Carolina 28792  
 828.693.0662 • FAX 828.693.0671

**ENVIRONMENTAL PLANNING & CIVIL ENGINEERING:**  
**VHB**  
**Engineering, Surveying & Landscape Architecture, PC**  
 Planning  
 Transportation  
 Land Development  
 Environmental Services  
 50 Main Street, Suite 300  
 White Plains, New York 10606  
 914.467.6600 • FAX 914.761.3759

**WASTEWATER AND WATER DESIGN:**  
**CEDARWOOD ENGINEERING SERVICES, PLLC**  
 CIVIL & ENVIRONMENTAL ENGINEERING  
 8-12 Dietz St., Suite 303  
 Oneonta, NY 60743-8073  
 248 Main St., PO Box 203  
 North Creek, NY 518.251.5160

**PROJECT SURVEYOR:**  
**Kirk K. Horton, Land Surveyor**  
 NYS License No. 049954  
 9 Broadway  
 Amenia, New York 12501  
 845.373.7809



No.	Revision	Date	Appr.
1	As Shown	March 3, 2014	

**Silo Ridge Resort Community**  
 4651 Route 22  
 Amenia, New York  
 Issued for:  
**Site Plan - Phase 1**

Not Issued for Construction  
 Drawing Title:  
**Drainage Profiles 4**

Drawing Number:  
**C8.06**  
 Sheet 67 of  
 Project Number  
 29011.00