

**OWNER:**  
**Silo Ridge Ventures, LLC**  
 5021 Route 44  
 Amenia, New York 12501  
 845.373.8020

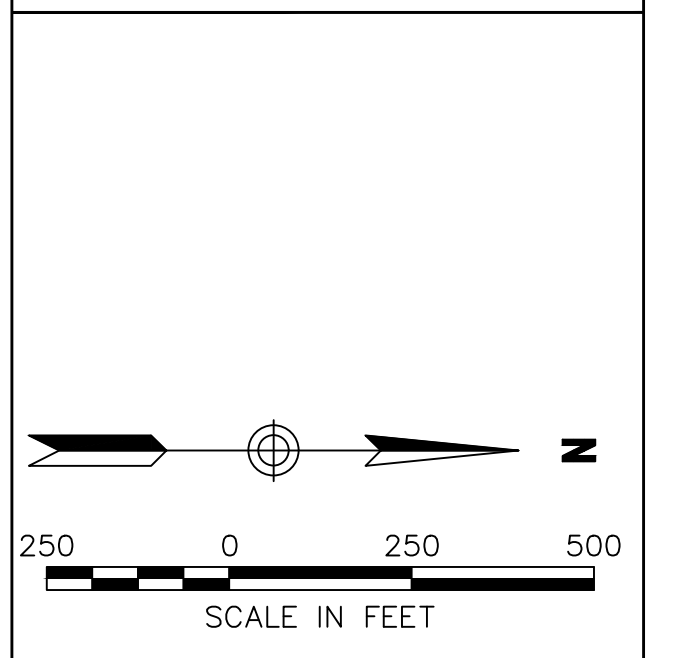
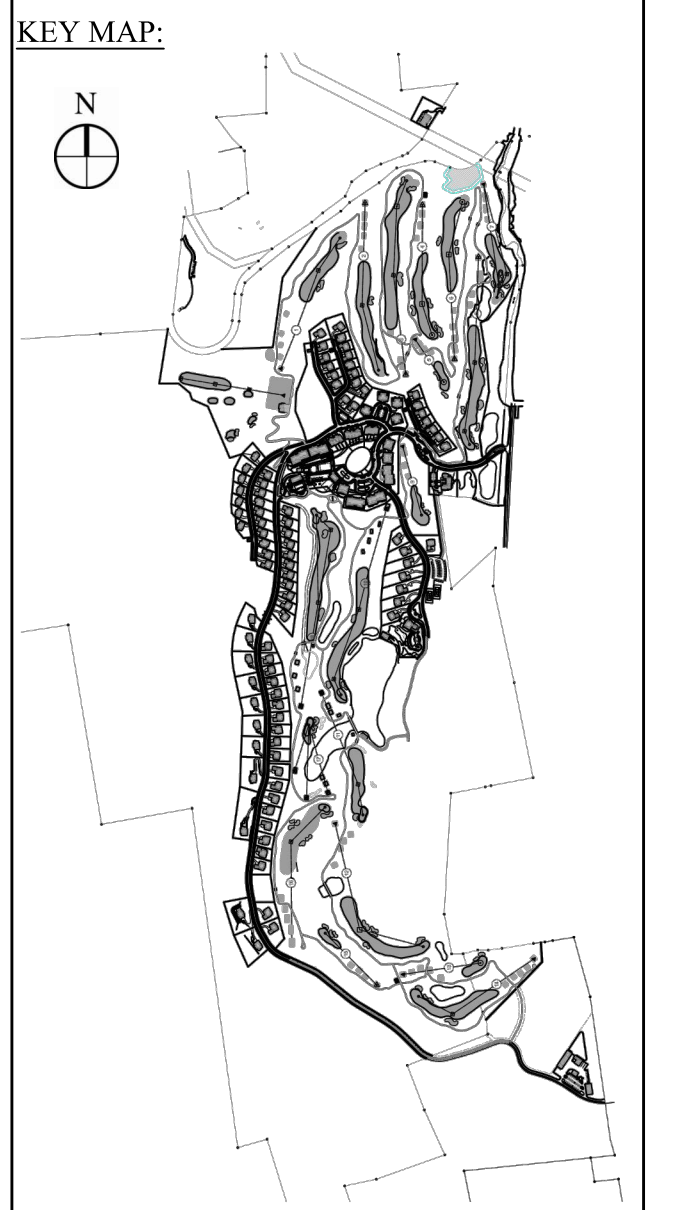
**ARCHITECTS, PLANNERS, LANDSCAPE ARCHITECTS:**  
**HART | HOWERTON**  
 10 East 40th Street New York, NY 10016  
 Tel: 212.683.5631 Fax: 212.481.3768  
 Email: NY@hart-howerton.com

**GOLF COURSE DESIGNERS:**  
**FAZIO DESIGN**  
 401 N. Main St., Ste. 400  
 Hendersonville, North Carolina 28792  
 828.693.0052 • FAX 828.693.0071

**ENVIRONMENTAL PLANNING & CIVIL ENGINEERING:**  
**VHB**  
**Engineering, Surveying & Landscape Architecture, PC**  
 Planning  
 Transportation  
 Land Development  
 Environmental Services  
 50 Main Street, Suite 360  
 White Plains, New York 10606  
 914.467.6600 • FAX 914.761.3759

**WASTEWATER AND WATER DESIGN:**  
**CEDARWOOD ENGINEERING SERVICES, PLLC**  
 CIVIL & ENVIRONMENTAL ENGINEERING  
 8-12 Dues St., Suite 303  
 Oneonta, NY 14857.423.8073  
 248 Main St., PO Box 203  
 North Creek, NY 518.251.5160

**PROJECT SURVEYOR:**  
**Kirk K. Horton, Land Surveyor**  
 NYS License No. 049954  
 9 Broadway  
 Amenia, New York 12501  
 845.373.7809



NO.	REVISION	DATE	BY
2	PER TOWN COMMENTS	8/17/14	AKB
1	PER TOWN COMMENTS	6/7/14	AKB
1	REVISION	DATE	BY
1	REV. JOHN M. LEONARD	7/17/14	AKB

Designed by **JG** Drawn by **CMG** Checked by **MWJ**  
 CAD checked by **MB** Approved by **ACC**  
 Date: As Shown Date: March 3, 2014

**Silo Ridge Resort Community**  
 4651 Route 22  
 Amenia, New York

Issued for: **Site Plan - Phase 1**

Not Issued for Construction

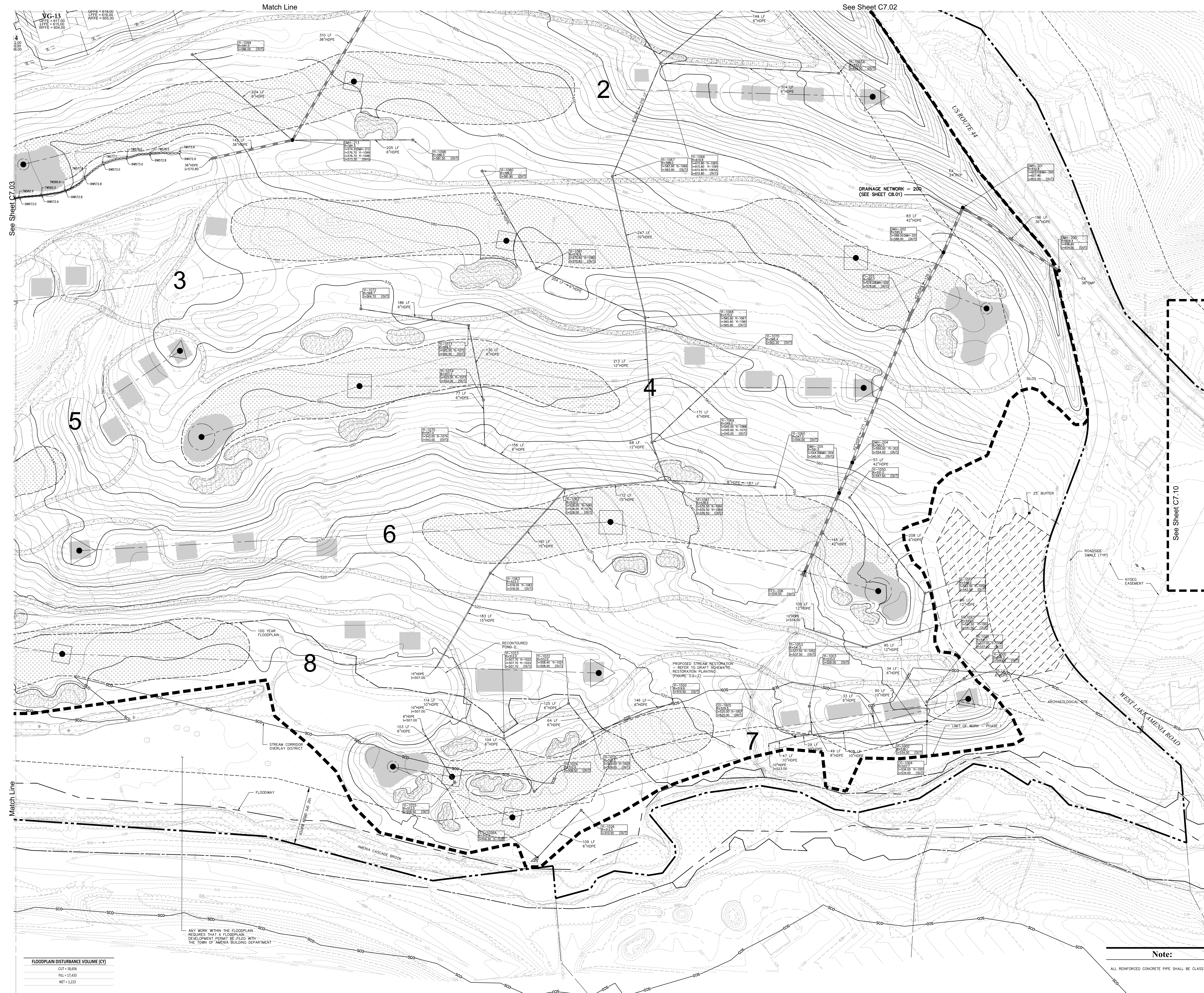
**Overall Grading and Drainage Plan**

Sheet Number: **C7.00**  
 Sheet 48 of 48  
 Project Number: 29011.00

**Notes:**

- ALL FOUNDATION DRAINS FOR RESIDENTIAL HOMES, CONDOMINIUM UNITS, TOWNHOUSES, AND AMENITY BUILDINGS SHALL BE DAY-LIGHTED, WHILE THE DOWNSPOUT RAIN LEADERS WILL EITHER BE DAY-LIGHTED OR CONNECTED TO CLOSED DRAINAGE SYSTEM DEPENDING ON ACCESSIBILITY





FLOODPLAIN DISTURBANCE VOLUME (CY)	
CUT	18,856
FILL	17,433
NET	1,423

ANY WORK WITHIN THE FLOODPLAIN REQUIRES THAT A FLOODPLAIN DEVELOPMENT PERMIT BE FILED WITH THE TOWN OF AMENIA BUILDING DEPARTMENT

**Note:**  
ALL REINFORCED CONCRETE PIPE SHALL BE CLASS V, RCP

**OWNER:**  
Silo Ridge Ventures, LLC  
5021 Route 44  
Amenia, New York 12501  
845.373.8020

**ARCHITECTS, PLANNERS, LANDSCAPE ARCHITECTS:**  
**HART | HOWERTON**  
10 East 40th Street, New York, NY 10016  
Tel: 212.683.5631 Fax: 212.481.3768  
Email: NY@hhowerton.com

**GOLF COURSE DESIGNERS:**  
**FAZIO DESIGN**  
401 N. Main St., Ste. 400  
Hendersonville, North Carolina 28792  
828.693.0052 • FAX 828.693.0071

**ENVIRONMENTAL PLANNING & CIVIL ENGINEERING:**  
**VHB**  
**Engineering, Surveying & Landscape Architecture, PC**  
Planning  
Transportation  
Land Development  
Environmental Services  
50 Main Street, Suite 360  
White Plains, New York 10606  
914.467.6600 • FAX 914.761.3759

**WASTEWATER AND WATER DESIGN:**  
**CEDARWOOD ENGINEERING SERVICES, PLLC**  
CIVIL & ENVIRONMENTAL ENGINEERING  
8-12 Dietz St., Suite 303  
Oswego, NY 14127-3073  
248 Main St., PO Box 203  
North Creek, NY 51823-5160

**PROJECT SURVEYOR:**  
**Kirk K. Horton, Land Surveyor**  
NYS License No. 049954  
9 Broadway  
Amenia, New York 12501  
845.373.7809

**KEY MAP:**  
N  
SCALE IN FEET  
0 50 100

NO.	DATE	DESCRIPTION	BY	CHKD
1	6/19/14	AD		

1 PER TOWN COMMENTS  
Designed by **JC** Drawn by **CMG** Checked by **MWJ**  
CAC checked by **MB** Approved by **ACC**  
Date: As Shown Date: March 3, 2014  
Project Title:

**Silo Ridge Resort Community**  
4651 Route 22  
Amenia, New York  
Site Plan - Phase 1

Not Issued for Construction  
Drawing Title:

**Grading and Drainage Plan 1**

Sheet Number: **C7.01**  
Sheet 49 of  
Project Number: 29011.00  
29011.00-PT-00.DWG





See Sheet C7.04

Match Line

Match Line

See Sheet C7.01

**OWNER:**  
 Silo Ridge Ventures, LLC  
 5021 Route 44  
 Amenia, New York 12501  
 845.373.8020

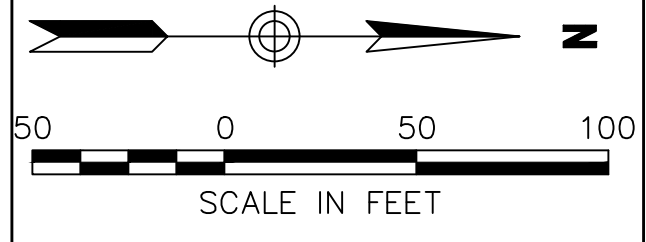
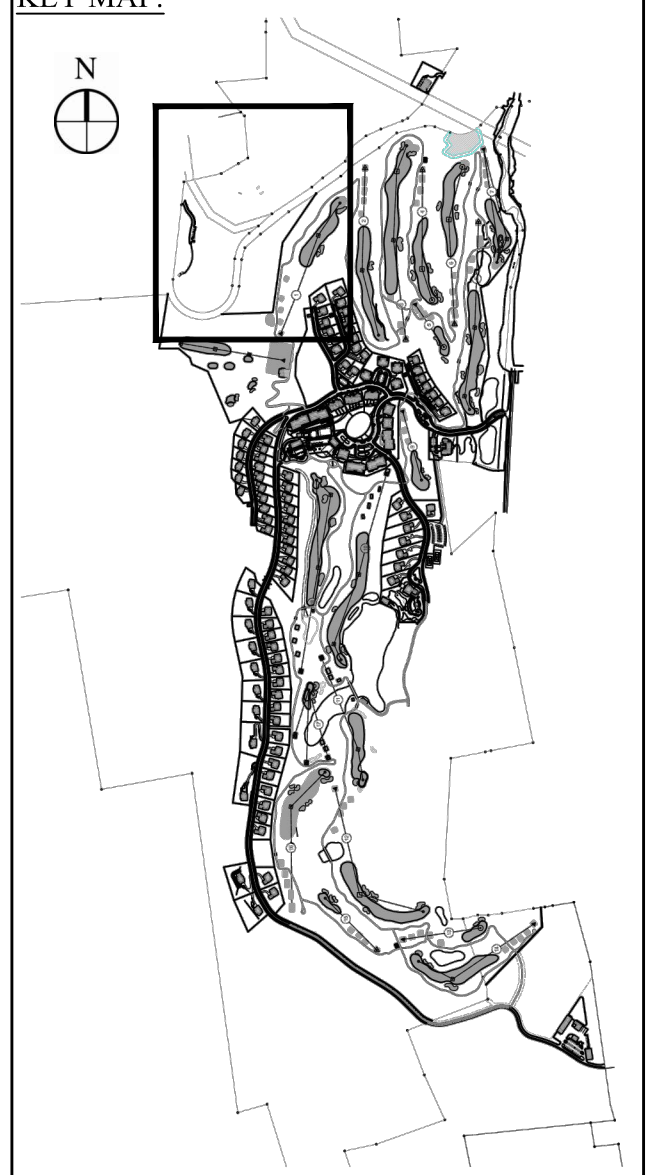
**ARCHITECTS, PLANNERS, LANDSCAPE ARCHITECTS:**  
 HART | HOWERTON  
 10 East 40th Street New York, NY 10016  
 Tel: 212.683.5631 Fax: 212.481.3768  
 E-mail: NY@hart-howerton.com

**GOLF COURSE DESIGNERS:**  
**FAZIO DESIGN**  
 401 N. Main St., Ste. 400  
 Hendersonville, North Carolina 28792  
 828.693.0052 • FAX 828.693.0071

**ENVIRONMENTAL PLANNING & CIVIL ENGINEERING:**  
**VHB**  
**Engineering, Surveying & Landscape Architecture, PC**  
 Planning  
 Transportation  
 Land Development  
 Environmental Services  
 50 Main Street, Suite 360  
 White Plains, New York 10606  
 914.467.6600 • FAX 914.761.3759

**WASTEWATER AND WATER DESIGN:**  
**CEDARWOOD ENGINEERING SERVICES, PLLC**  
 CIVIL & ENVIRONMENTAL ENGINEERING  
 8-12 Dietz St., Suite 303  
 Oneonta, NY 10757-4320  
 248 Main St., PO Box 203  
 North Creek, NY 518.251.5160

**PROJECT SURVEYOR:**  
**Kirk K. Horton, Land Surveyor**  
 NYS License No. 049954  
 9 Broadway  
 Amenia, New York 12501  
 845.373.7809



2	PER TOWN COMMENTS	8/11/14	AKB
1	PER TOWN COMMENTS	6/19/14	AKB
	Revision	Date	Prepared
Designed by	JC	Drawn by	CMG
CAD checked by	MB	Approved by	ACD
Date	As Shown	Date	March 3, 2014

**Silo Ridge Resort Community**  
 4651 Route 22  
 Amenia, New York

**Site Plan - Phase 1**

Not Issued for Construction

**Grading and Drainage Plan 2**

Sheet Number  
**C7.02**  
 of  
 50  
 Project Number  
 29011.00



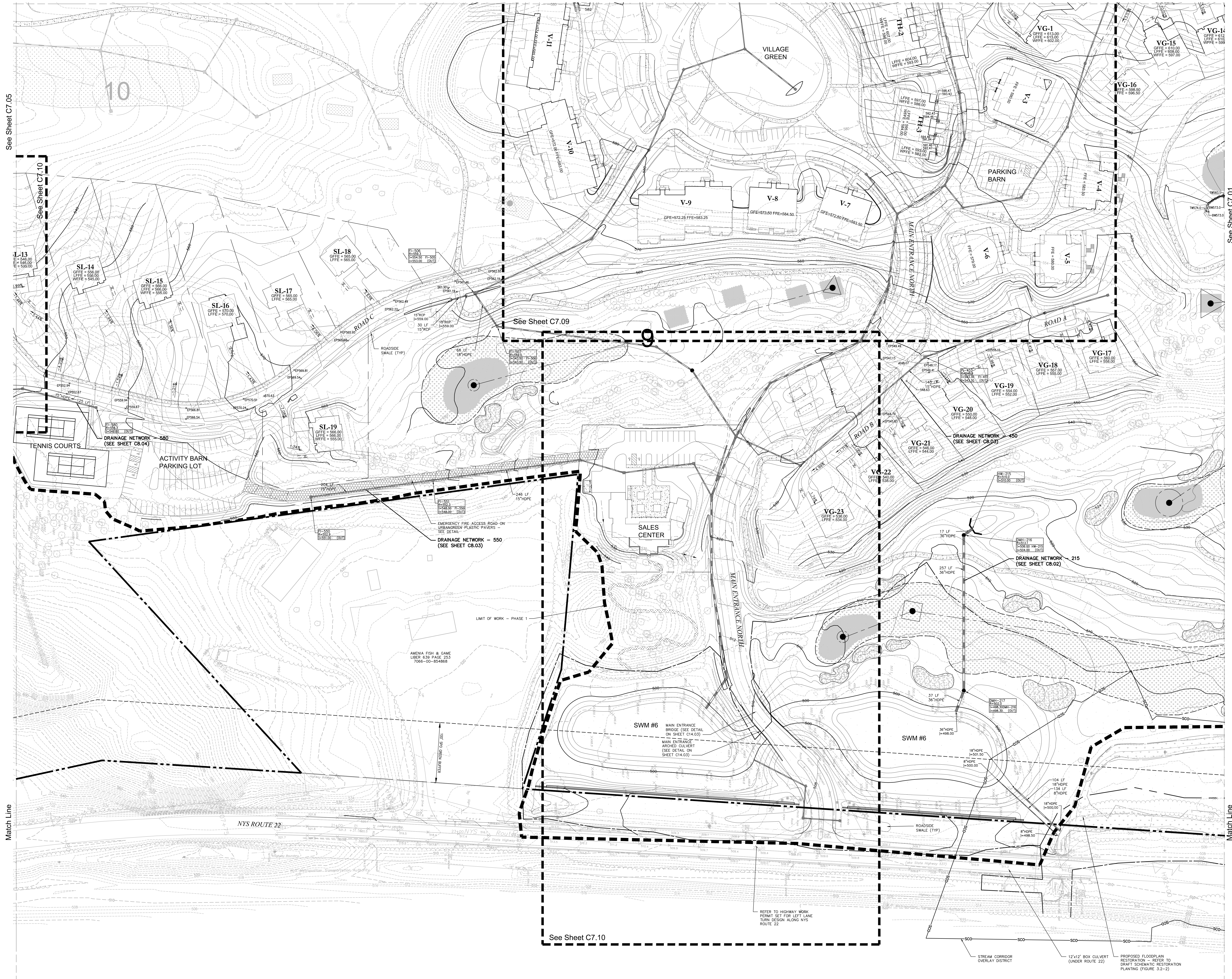
Match Line

See Sheet C7.04

See Sheet C7.05

See Sheet C7.10

See Sheet C7.01



See Sheet C7.09

See Sheet C7.10

Match Line

Match Line

**OWNER:**  
 Silo Ridge Ventures, LLC  
 5021 Route 44  
 Amenia, New York 12501  
 845.373.8020

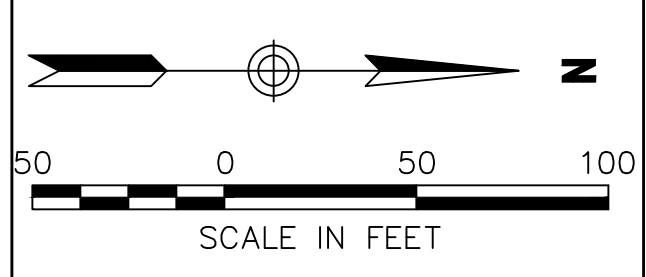
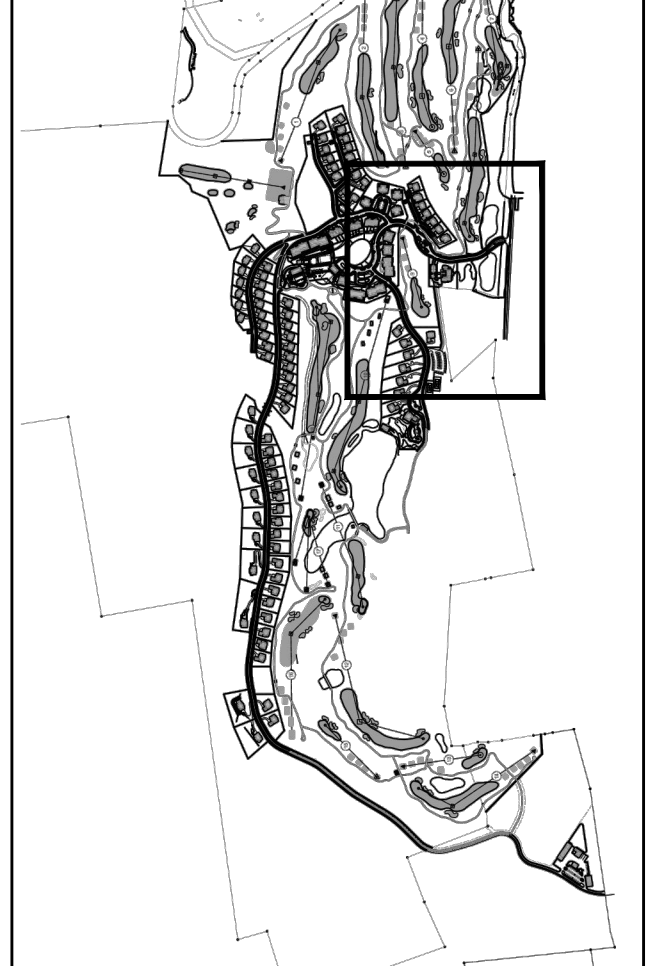
**ARCHITECTS, PLANNERS, LANDSCAPE ARCHITECTS:**  
**HART | HOWERTON**  
 10 East 40th Street, New York, NY 10016  
 Tel: 212.683.5631 Fax: 212.481.3768  
 Email: NY@hart-howerton.com

**GOLF COURSE DESIGNERS:**  
**FAZIO DESIGN**  
 401 N. Main St., Ste. 400  
 Hendersonville, North Carolina 28792  
 828.693.0052 • FAX 828.693.0071

**ENVIRONMENTAL PLANNING & CIVIL ENGINEERING:**  
**VHB**  
**Engineering, Surveying & Landscape Architecture, PC**  
 Planning  
 Transportation  
 Land Development  
 Environmental Services  
 50 Main Street, Suite 360  
 White Plains, New York 10606  
 914.467.6600 • FAX 914.761.3759

**WASTEWATER AND WATER DESIGN:**  
**CEDARWOOD ENGINEERING SERVICES, PLLC**  
 CIVIL & ENVIRONMENTAL ENGINEERING  
 8-12 Dietz St., Suite 303  
 Oneonta, NY 10757-3073  
 248 Main St., PO Box 203  
 North Creek, NY 518.251.5160

**PROJECT SURVEYOR:**  
**Kirk K. Horton, Land Surveyor**  
 NYS License No. 049954  
 9 Broadway  
 Amenia, New York 12501  
 845.373.7809



NO.	DESCRIPTION	DATE	BY

2	PER TOWN COMMENTS	8/17/14	AD
1	PER TOWN COMMENTS	6/19/14	AD

Designed by **JC** Drawn by **CMG** Checked by **MWJ**  
 CAD checked by **MB** Approved by **ACD**  
 Date: As Shown Date: March 3, 2014  
 Project Title:

**Silo Ridge Resort Community**  
 4651 Route 22  
 Amenia, New York

Issued for: **Site Plan - Phase 1**

Not Issued for Construction  
 Drawing Title:

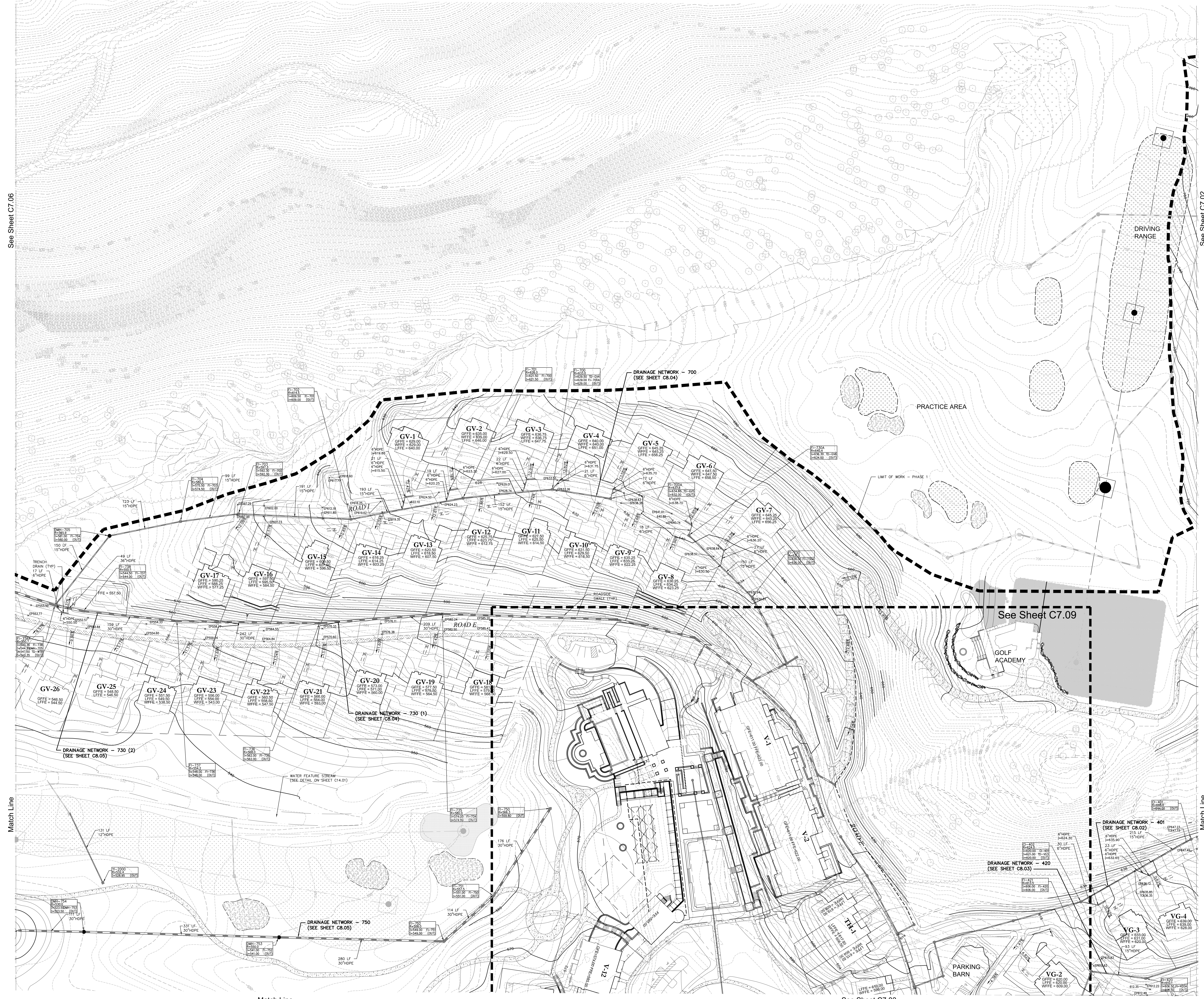
**Grading and Drainage Plan 3**

Sheet Number: **C7.03**  
 Sheet 51 of 51  
 Project Number: 29011.00



See Sheet C7.06

See Sheet C7.02



Match Line

Match Line

Match Line

See Sheet C7.03

**OWNER:**  
Silo Ridge Ventures, LLC  
5021 Route 44  
Amenia, New York 12501  
845.373.8020

**ARCHITECTS, PLANNERS, LANDSCAPE ARCHITECTS:**  
**HART | HOWERTON**  
10 East 40th Street, New York, NY 10016  
Tel: 212.683.5631 Fax: 212.481.3768  
Email: NY@hart-howerton.com

**GOLF COURSE DESIGNERS:**  
**FAZIO DESIGN**  
401 N. Main St., Ste. 400  
Hendersonville, North Carolina 28792  
828.693.0052 • FAX 828.693.0071

**ENVIRONMENTAL PLANNING & CIVIL ENGINEERING:**  
**VHB**  
**Engineering, Surveying & Landscape Architecture, PC**  
Planning  
Transportation  
Land Development  
Environmental Services  
50 Main Street, Suite 360  
White Plains, New York 10606  
914.467.6600 • FAX 914.761.3759

**WASTEWATER AND WATER DESIGN:**  
**CEDARWOOD ENGINEERING SERVICES, PLLC**  
CIVIL & ENVIRONMENTAL ENGINEERING  
8-12 Dietz St., Suite 303  
Oswego, NY 14127-3073  
248 Main St., PO Box 203  
North Creek, NY 518.251.5160

**PROJECT SURVEYOR:**  
**Kirk K. Horton, Land Surveyor**  
NYS License No. 049954  
9 Broadway  
Amenia, New York 12501  
845.373.7809

**KEY MAP:**  
N  
[Map showing project location within a larger regional context]

50 0 50 100  
SCALE IN FEET

2	PER TOWN COMMENTS	8/17/14	AKB
1	PER TOWN COMMENTS	6/7/14	AKB
	Revision	Date	Prepared

Designed by **JC** Drawn by **CMG** Checked by **MWJ**  
 CAD checked by **MB** Approved by **ACC**  
 Date: As Shown Date: March 3, 2014  
 Project Title: Silo Ridge Resort Community

4651 Route 22  
Amenia, New York  
Site Plan - Phase 1

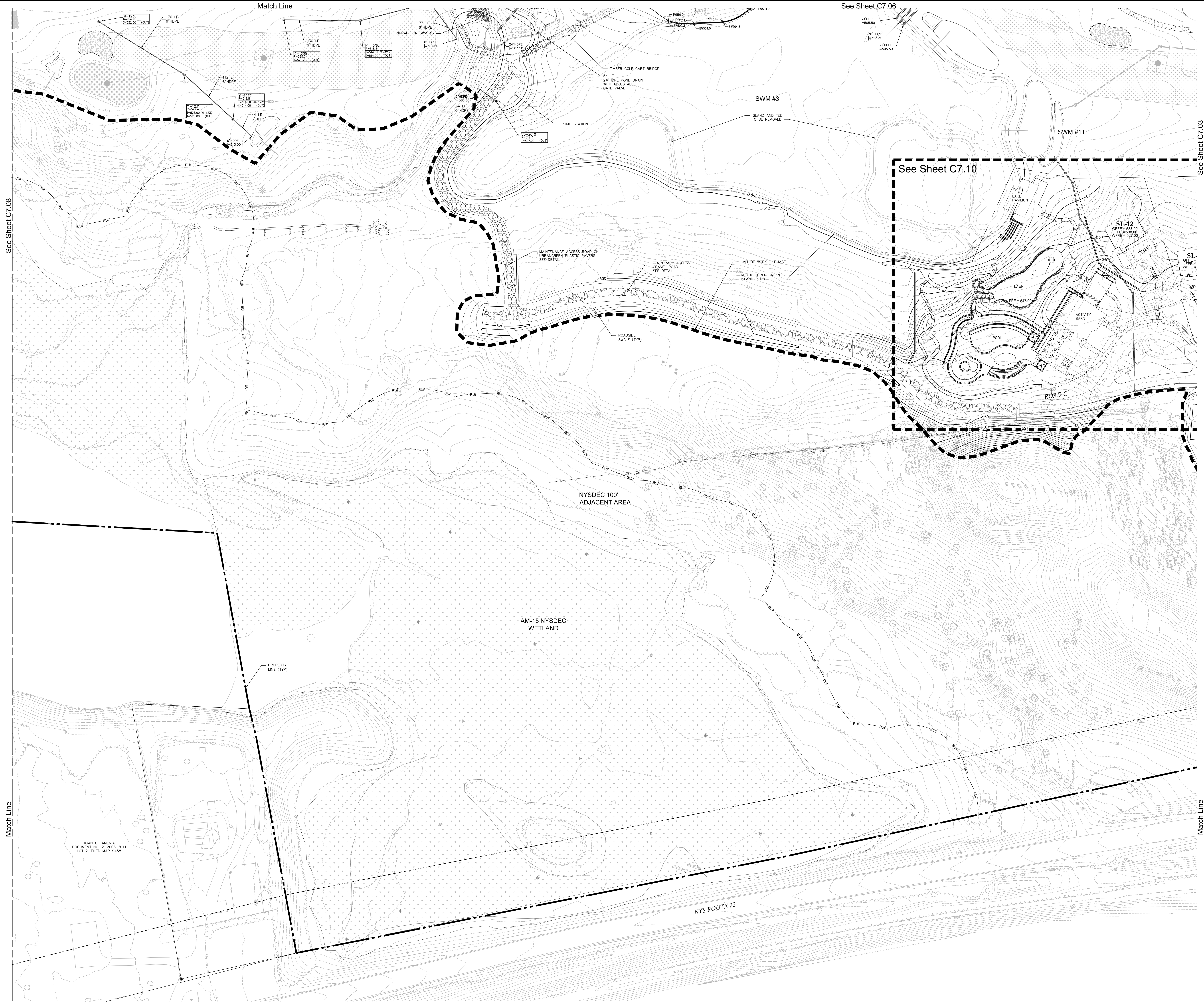
Not Issued for Construction  
Priority Title

**Grading and Drainage Plan 4**

Sheet Number: **C7.04**  
 Sheet 52 of 52  
 Project Number: 29011.00  
 29011-00-PT-02.DWG



\\csh\proj\white\plans\2011\00 AP\AW\CAD\PLANSET\PHASE 1 SITE PLANS\2011\00-PT-05  
 Sheet Friday, April 27, 2014 2:02:12 PM CORP/NO Pinned Friday, April 27, 2014 4:13:15 PM Orlins, Christopher



**OWNER:**  
 Silo Ridge Ventures, LLC  
 5021 Route 44  
 Arden, New York 12501  
 845.373.8020

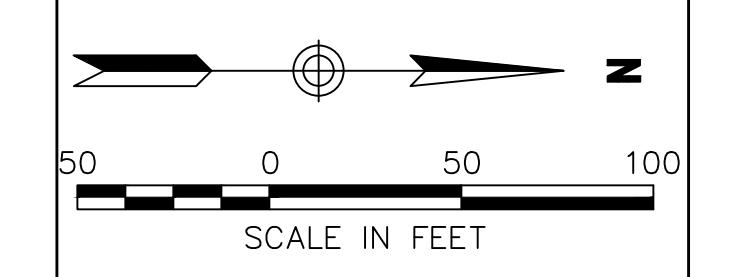
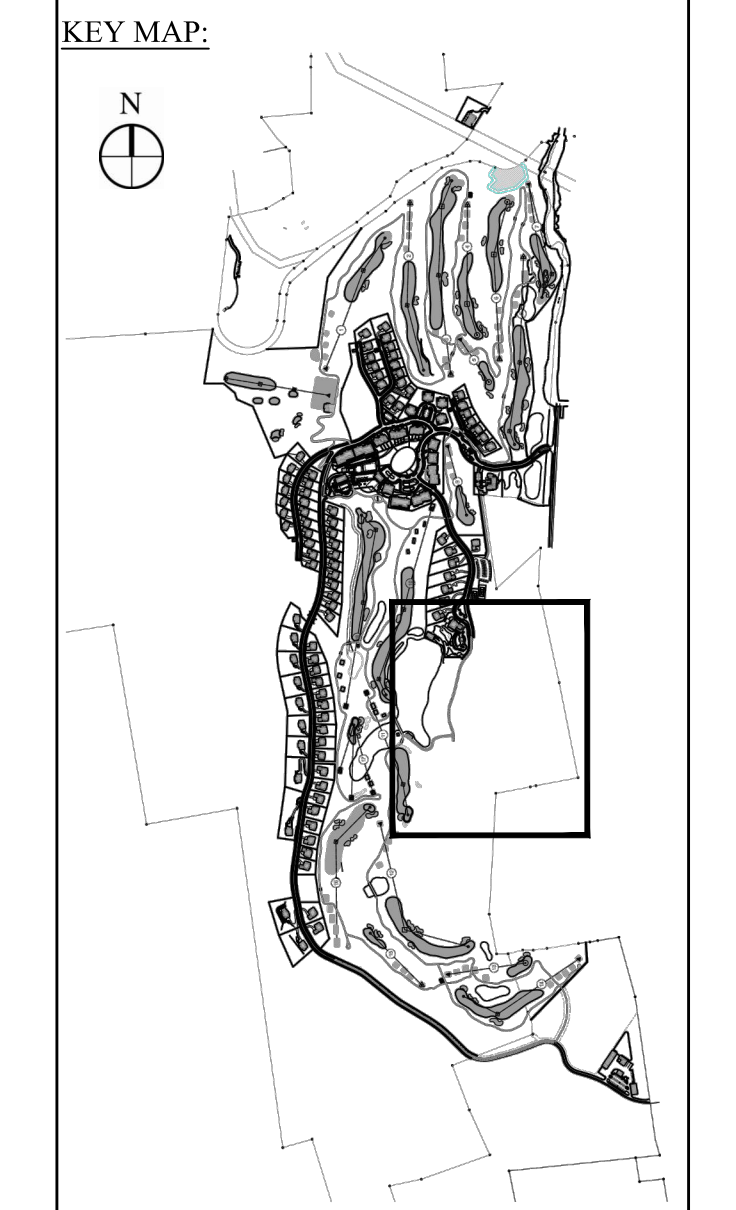
**ARCHITECTS, PLANNERS, LANDSCAPE ARCHITECTS:**  
 HART | HOWERTON  
 10 East 40th Street New York, NY 10016  
 Tel: 212.683.5631 Fax: 212.481.3768  
 Email: NY@hart-howerton.com

**GOLF COURSE DESIGNERS:**  
 FAZIO DESIGN  
 401 N. Main St., Ste. 400  
 Hendersonville, North Carolina 28792  
 828.693.0052 • FAX 828.693.0071

**ENVIRONMENTAL PLANNING & CIVIL ENGINEERING:**  
 VHB  
 Engineering, Surveying & Landscape Architecture, PC  
 Planning  
 Transportation  
 Land Development  
 Environmental Services  
 50 Main Street, Suite 360  
 White Plains, New York 10606  
 914.467.6600 • FAX 914.761.3759

**WASTEWATER AND WATER DESIGN:**  
 CEDARWOOD ENGINEERING SERVICES, PLLC  
 CIVIL & ENVIRONMENTAL ENGINEERING  
 8-12 Dietz St., Suite 303  
 Oneonta, NY 14757-3073  
 248 Main St., PO Box 203  
 North Creek, NY 518.251.5160

**PROJECT SURVEYOR:**  
 Kirk K. Horton, Land Surveyor  
 NYS License No. 049954  
 9 Broadway  
 Arden, New York 12501  
 845.373.7809



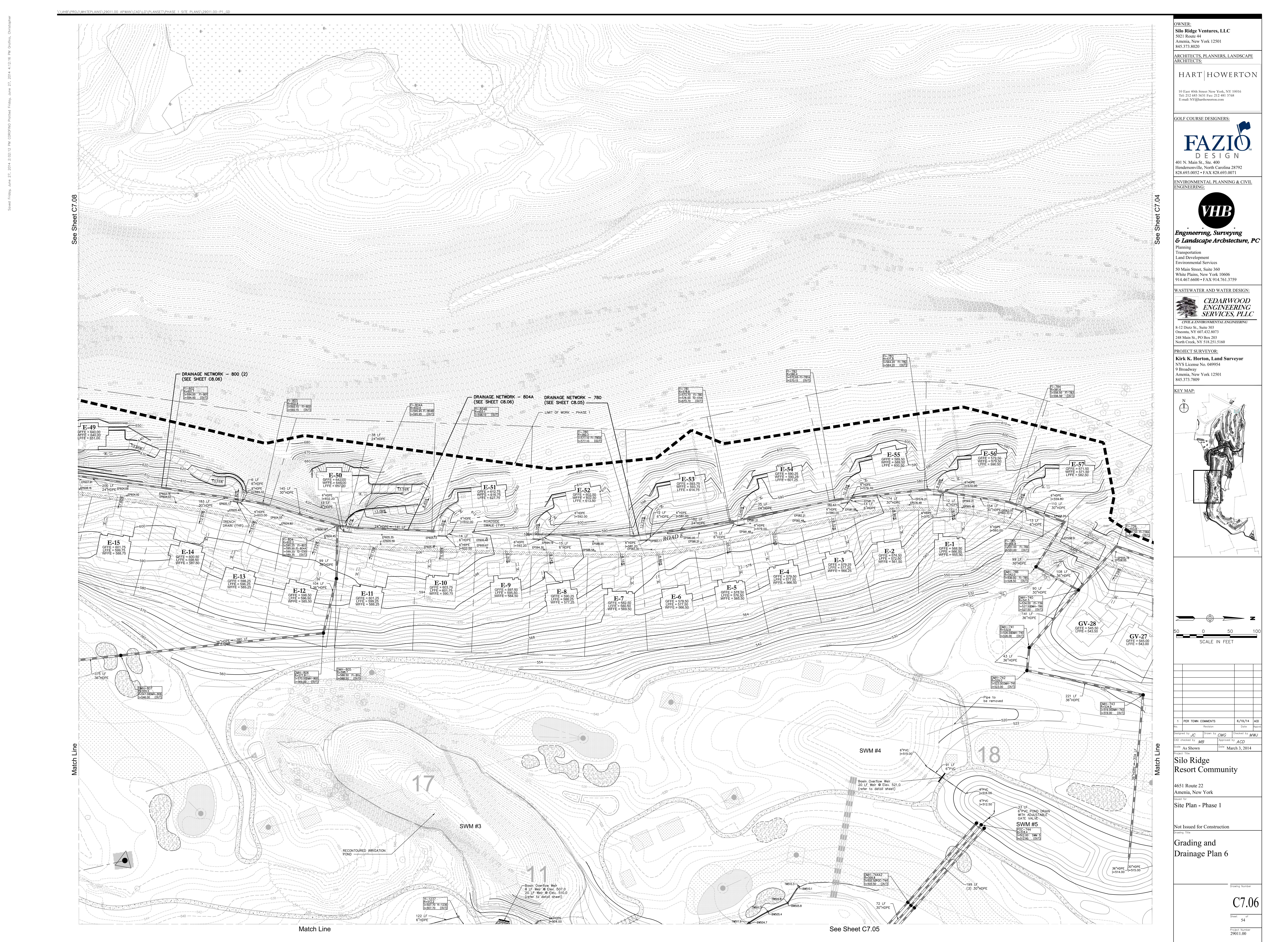

1 PER TOWN COMMENTS	6/19/14	ACD
Revised	Date	Revised
Designed by JC	Drawn by CMG	Checked by MWJ
CAD checked by MB	Approved by ACD	
Date: As Shown	Date: March 3, 2014	

**Project Title:**  
 Silo Ridge Resort Community  
 4651 Route 22  
 Arden, New York  
 Issued for:  
 Site Plan - Phase 1

Not Issued for Construction  
 Drawing Number:  
**C7.05**  
 Sheet 53 of  
 Project Number:  
 29011.00

29011.00-PT-05.DWG





See Sheet C7.08

See Sheet C7.04

Match Line

Match Line

Match Line

See Sheet C7.05

**OWNER:**  
Silo Ridge Ventures, LLC  
5011 Route 44  
Amenia, New York 12501  
845.373.8020

**ARCHITECTS, PLANNERS, LANDSCAPE ARCHITECTS:**  
**HART | HOWERTON**  
10 East 40th Street, New York, NY 10016  
Tel: 212.683.5631 Fax: 212.481.3768  
E-mail: NY@hart-howerton.com

**GOLF COURSE DESIGNERS:**  
**FAZIO DESIGN**  
401 N. Main St., Ste. 400  
Hendersonville, North Carolina 28792  
828.693.0052 • FAX 828.693.0071

**ENVIRONMENTAL PLANNING & CIVIL ENGINEERING:**  
**VHB**  
**Engineering, Surveying & Landscape Architecture, PC**  
Planning  
Transportation  
Land Development  
Environmental Services  
50 Main Street, Suite 360  
White Plains, New York 10606  
914.467.6600 • FAX 914.761.3759

**WASTEWATER AND WATER DESIGN:**  
**CEDARWOOD ENGINEERING SERVICES, PLLC**  
CIVIL & ENVIRONMENTAL ENGINEERING  
8-12 Dietz St., Suite 303  
Oswego, NY 14742-3073  
248 Main St., PO Box 203  
North Creek, NY 51821-5160

**PROJECT SURVEYOR:**  
**Kirk K. Horton, Land Surveyor**  
NYS License No. 049954  
9 Broadway  
Amenia, New York 12501  
845.373.7809

**KEY MAP:**  
[Key map showing the project location within the resort community]

**SCALE IN FEET**  
0 50 100

1	PER TOWN COMMENTS	6/19/14	ACD
2	Revised	06/19/14	ACD
3	Revised	06/19/14	ACD
4	Revised	06/19/14	ACD
5	Revised	06/19/14	ACD
6	Revised	06/19/14	ACD
7	Revised	06/19/14	ACD
8	Revised	06/19/14	ACD
9	Revised	06/19/14	ACD
10	Revised	06/19/14	ACD
11	Revised	06/19/14	ACD
12	Revised	06/19/14	ACD
13	Revised	06/19/14	ACD
14	Revised	06/19/14	ACD
15	Revised	06/19/14	ACD
16	Revised	06/19/14	ACD
17	Revised	06/19/14	ACD
18	Revised	06/19/14	ACD
19	Revised	06/19/14	ACD
20	Revised	06/19/14	ACD
21	Revised	06/19/14	ACD
22	Revised	06/19/14	ACD
23	Revised	06/19/14	ACD
24	Revised	06/19/14	ACD
25	Revised	06/19/14	ACD
26	Revised	06/19/14	ACD
27	Revised	06/19/14	ACD
28	Revised	06/19/14	ACD
29	Revised	06/19/14	ACD
30	Revised	06/19/14	ACD
31	Revised	06/19/14	ACD
32	Revised	06/19/14	ACD
33	Revised	06/19/14	ACD
34	Revised	06/19/14	ACD
35	Revised	06/19/14	ACD
36	Revised	06/19/14	ACD
37	Revised	06/19/14	ACD
38	Revised	06/19/14	ACD
39	Revised	06/19/14	ACD
40	Revised	06/19/14	ACD
41	Revised	06/19/14	ACD
42	Revised	06/19/14	ACD
43	Revised	06/19/14	ACD
44	Revised	06/19/14	ACD
45	Revised	06/19/14	ACD
46	Revised	06/19/14	ACD
47	Revised	06/19/14	ACD
48	Revised	06/19/14	ACD
49	Revised	06/19/14	ACD
50	Revised	06/19/14	ACD
51	Revised	06/19/14	ACD
52	Revised	06/19/14	ACD
53	Revised	06/19/14	ACD
54	Revised	06/19/14	ACD
55	Revised	06/19/14	ACD
56	Revised	06/19/14	ACD
57	Revised	06/19/14	ACD
58	Revised	06/19/14	ACD
59	Revised	06/19/14	ACD
60	Revised	06/19/14	ACD
61	Revised	06/19/14	ACD
62	Revised	06/19/14	ACD
63	Revised	06/19/14	ACD
64	Revised	06/19/14	ACD
65	Revised	06/19/14	ACD
66	Revised	06/19/14	ACD
67	Revised	06/19/14	ACD
68	Revised	06/19/14	ACD
69	Revised	06/19/14	ACD
70	Revised	06/19/14	ACD
71	Revised	06/19/14	ACD
72	Revised	06/19/14	ACD
73	Revised	06/19/14	ACD
74	Revised	06/19/14	ACD
75	Revised	06/19/14	ACD
76	Revised	06/19/14	ACD
77	Revised	06/19/14	ACD
78	Revised	06/19/14	ACD
79	Revised	06/19/14	ACD
80	Revised	06/19/14	ACD
81	Revised	06/19/14	ACD
82	Revised	06/19/14	ACD
83	Revised	06/19/14	ACD
84	Revised	06/19/14	ACD
85	Revised	06/19/14	ACD
86	Revised	06/19/14	ACD
87	Revised	06/19/14	ACD
88	Revised	06/19/14	ACD
89	Revised	06/19/14	ACD
90	Revised	06/19/14	ACD
91	Revised	06/19/14	ACD
92	Revised	06/19/14	ACD
93	Revised	06/19/14	ACD
94	Revised	06/19/14	ACD
95	Revised	06/19/14	ACD
96	Revised	06/19/14	ACD
97	Revised	06/19/14	ACD
98	Revised	06/19/14	ACD
99	Revised	06/19/14	ACD
100	Revised	06/19/14	ACD

**Silo Ridge Resort Community**  
4651 Route 22  
Amenia, New York

**Site Plan - Phase 1**

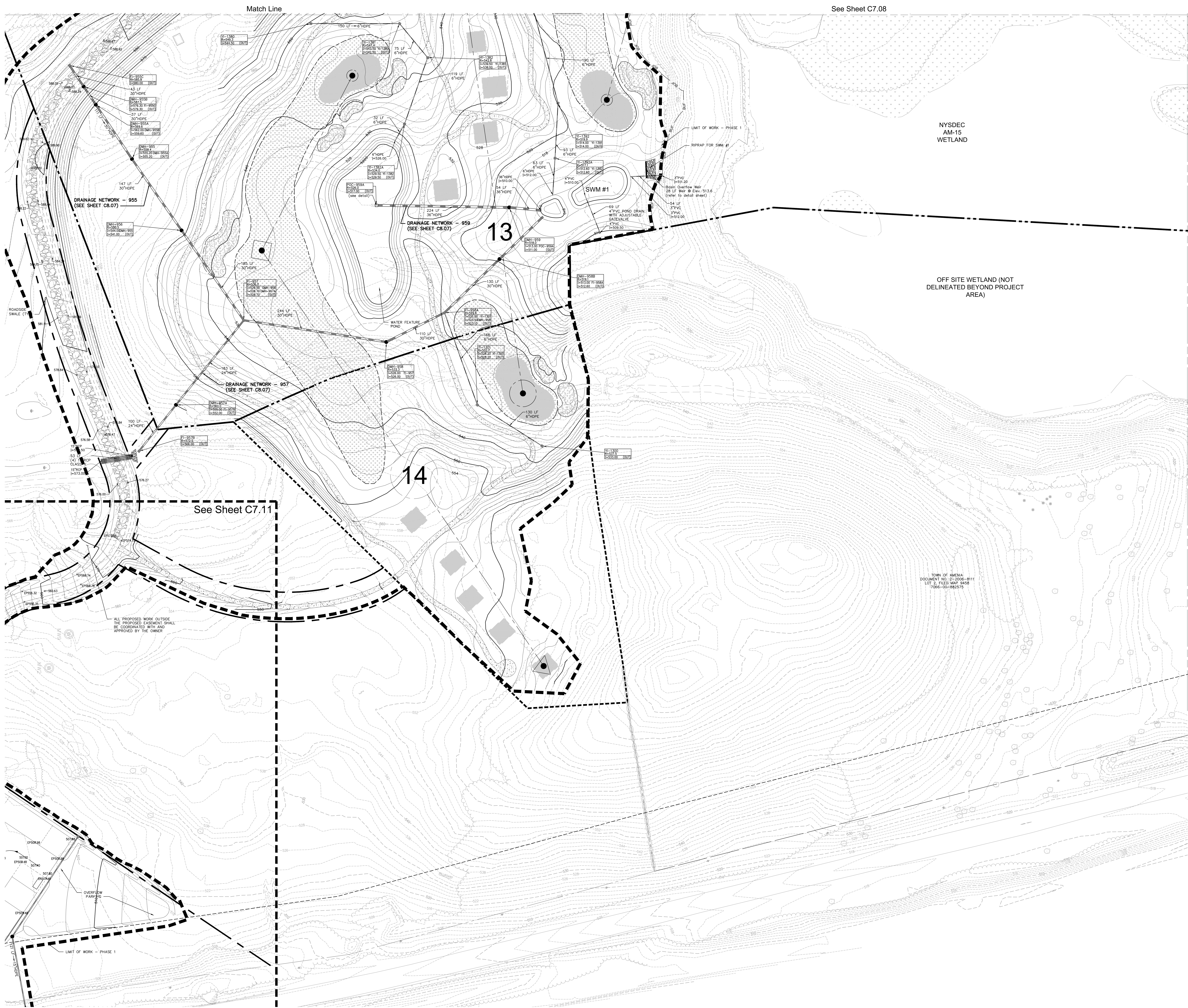
Not Issued for Construction  
Drawn by: [Name]

**Grading and Drainage Plan 6**

Sheet Number: **C7.06**  
Sheet 54 of 54  
Project Number: 29011.00

29011.00-PT-03.DWG





Match Line

See Sheet C7.08

See Sheet C7.05

See Sheet C7.11

ALL PROPOSED WORK OUTSIDE THE PROPOSED EASEMENT SHALL BE COORDINATED WITH AND APPROVED BY THE OWNER.

TOWN OF AMENIA DOCUMENT NO. 2-2006-8111 LOT 2, FILED MAP 9458 7066-00-882575

**OWNER:**  
Silo Ridge Ventures, LLC  
5021 Route 44  
Amenia, New York 12501  
845.373.8020

**ARCHITECTS, PLANNERS, LANDSCAPE ARCHITECTS:**  
**HART | HOWERTON**  
10 East 40th Street, New York, NY 10016  
Tel: 212.683.5631 Fax: 212.481.3768  
Email: NY@hart-howerton.com

**GOLF COURSE DESIGNERS:**  
**FAZIO DESIGN**  
401 N. Main St., Ste. 400  
Hendersonville, North Carolina 28792  
828.693.0052 • FAX 828.693.0071

**ENVIRONMENTAL PLANNING & CIVIL ENGINEERING:**  
**VHB**  
**Engineering, Surveying & Landscape Architecture, PC**  
Planning  
Transportation  
Land Development  
Environmental Services  
50 Main Street, Suite 360  
White Plains, New York 10606  
914.467.6600 • FAX 914.761.3759

**WASTEWATER AND WATER DESIGN:**  
**CEDARWOOD ENGINEERING SERVICES, PLLC**  
CIVIL & ENVIRONMENTAL ENGINEERING  
8-12 Dietz St., Suite 303  
Oneonta, NY 10757-4230  
248 Main St., PO Box 203  
North Creek, NY 518.251.5160

**PROJECT SURVEYOR:**  
**Kirk K. Horton, Land Surveyor**  
NYS License No. 049954  
9 Broadway  
Amenia, New York 12501  
845.373.7809

**KEY MAP:**  
N  
  
50 0 50 100  
SCALE IN FEET

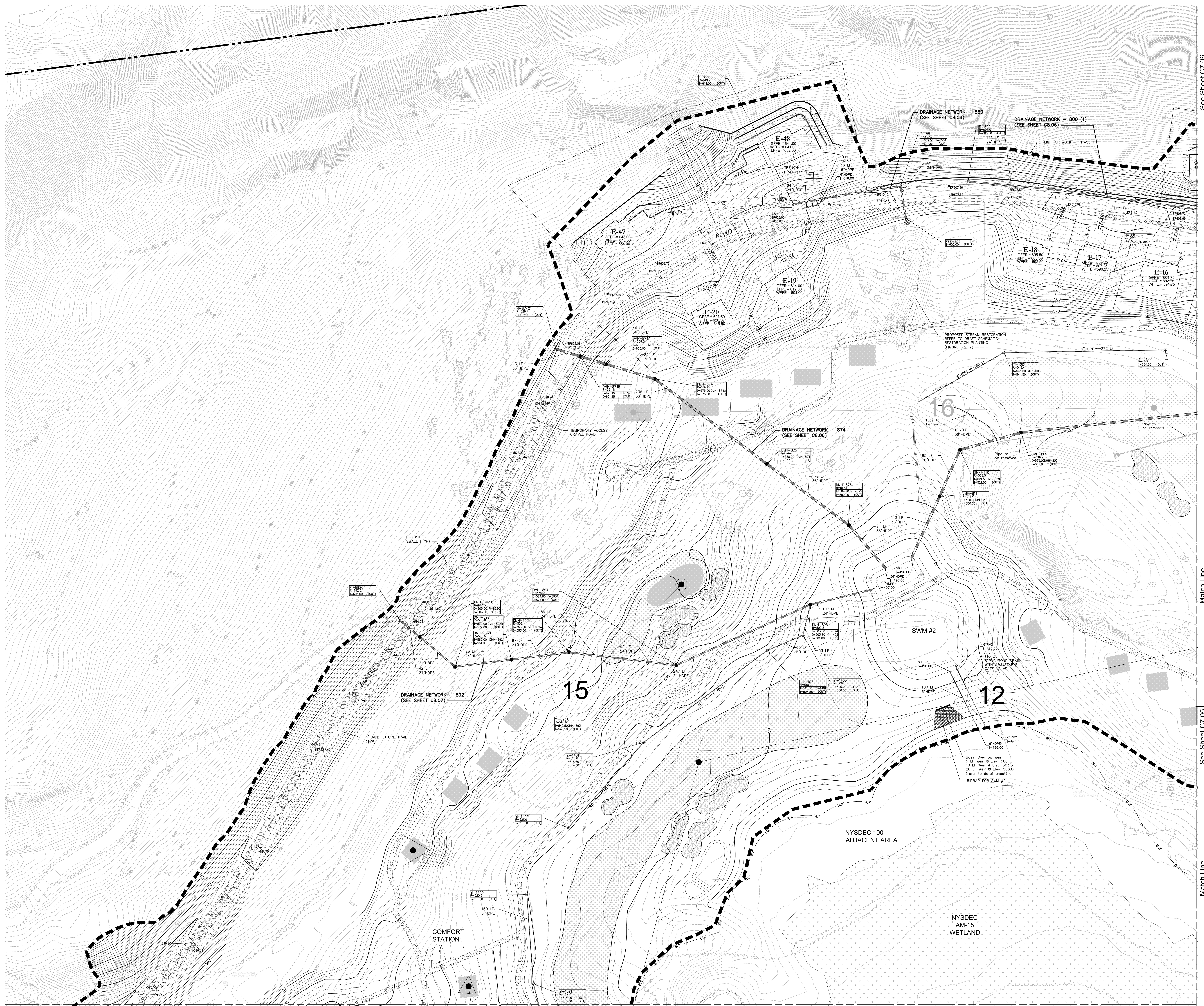
2	PER TOWN COMMENTS	8/11/14	AKB
1	PER TOWN COMMENTS	6/19/14	AKB

Designed by **JC** Drawn by **CMG** Checked by **MWJ**  
CAD checked by **MB** Approved by **ACD**  
Date: As Shown Date: March 3, 2014  
Project Title: **Silo Ridge Resort Community**  
4651 Route 22  
Amenia, New York  
Issued for: **Site Plan - Phase 1**  
Not Issued for Construction  
Drawing Title: **Grading and Drainage Plan 7**

Drawing Number: **C7.07**  
Sheet 55 of 55  
Project Number: 29011.00  
29011.00-PT-05.DWG



I:\GPR\PROJECTS\2011\00 AP\AWA\CAD\PLANS\TYPHASE 1 SITE PLANS\2011\00-PT-05  
 Saved Friday, June 27, 2014 4:02:12 PM CDR/MD Picked Friday, June 27, 2014 4:02:18 PM O'Neil, Christopher



**OWNER:**  
 Silo Ridge Ventures, LLC  
 5021 Route 44  
 Amenia, New York 12501  
 845.373.8020

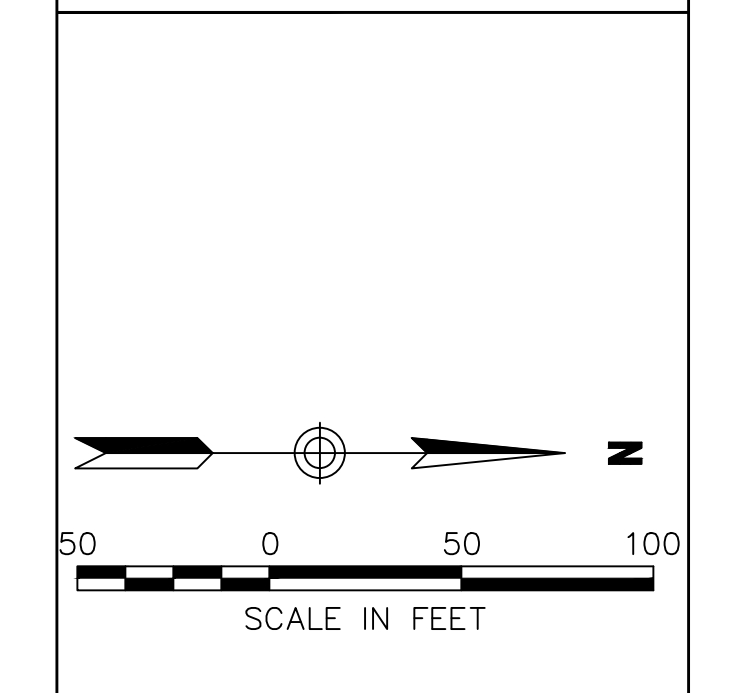
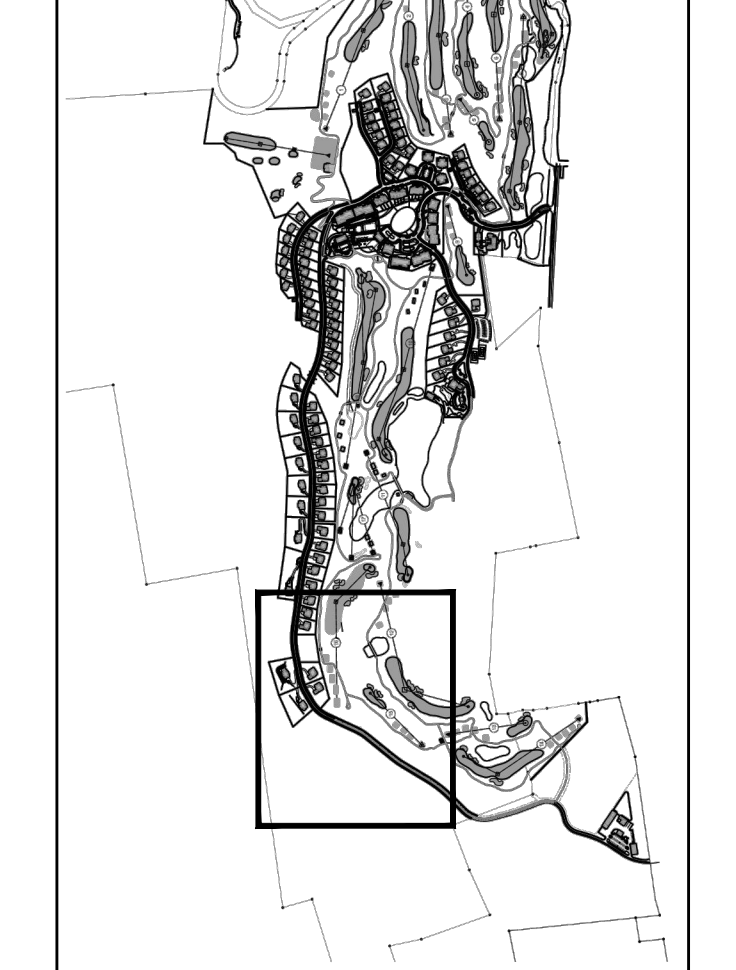
**ARCHITECTS, PLANNERS, LANDSCAPE ARCHITECTS:**  
**HART | HOWERTON**  
 10 East 40th Street New York, NY 10016  
 Tel: 212.683.5631 Fax: 212.481.3768  
 Email: NY@hhowerton.com

**GOLF COURSE DESIGNERS:**  
**FAZIO DESIGN**  
 401 N. Main St., Ste. 400  
 Hendersonville, North Carolina 28792  
 828.693.0052 • FAX 828.693.0071

**ENVIRONMENTAL PLANNING & CIVIL ENGINEERING:**  
**VHB**  
**Engineering, Surveying & Landscape Architecture, PC**  
 Planning  
 Transportation  
 Land Development  
 Environmental Services  
 50 Main Street, Suite 300  
 White Plains, New York 10606  
 914.467.6600 • FAX 914.761.3759

**WASTEWATER AND WATER DESIGN:**  
**CEDARWOOD ENGINEERING SERVICES, PLLC**  
 CIVIL & ENVIRONMENTAL ENGINEERING  
 8-12 Dues St., Suite 303  
 Oneonta, NY 10747-2130  
 248 Main St., PO Box 203  
 North Creek, NY 518.251.5160

**PROJECT SURVEYOR:**  
**Kirk K. Horton, Land Surveyor**  
 NYS License No. 049954  
 9 Broadway  
 Amenia, New York 12501  
 845.373.7809



NO.	DATE	DESCRIPTION	BY	CHECKED
1	6/19/14	FOR TOWN COMMENTS	CMG	MB
2	6/19/14	FOR TOWN COMMENTS	CMG	MB
3	6/19/14	FOR TOWN COMMENTS	CMG	MB
4	6/19/14	FOR TOWN COMMENTS	CMG	MB
5	6/19/14	FOR TOWN COMMENTS	CMG	MB
6	6/19/14	FOR TOWN COMMENTS	CMG	MB
7	6/19/14	FOR TOWN COMMENTS	CMG	MB
8	6/19/14	FOR TOWN COMMENTS	CMG	MB
9	6/19/14	FOR TOWN COMMENTS	CMG	MB
10	6/19/14	FOR TOWN COMMENTS	CMG	MB
11	6/19/14	FOR TOWN COMMENTS	CMG	MB
12	6/19/14	FOR TOWN COMMENTS	CMG	MB
13	6/19/14	FOR TOWN COMMENTS	CMG	MB
14	6/19/14	FOR TOWN COMMENTS	CMG	MB
15	6/19/14	FOR TOWN COMMENTS	CMG	MB
16	6/19/14	FOR TOWN COMMENTS	CMG	MB
17	6/19/14	FOR TOWN COMMENTS	CMG	MB
18	6/19/14	FOR TOWN COMMENTS	CMG	MB
19	6/19/14	FOR TOWN COMMENTS	CMG	MB
20	6/19/14	FOR TOWN COMMENTS	CMG	MB
21	6/19/14	FOR TOWN COMMENTS	CMG	MB
22	6/19/14	FOR TOWN COMMENTS	CMG	MB
23	6/19/14	FOR TOWN COMMENTS	CMG	MB
24	6/19/14	FOR TOWN COMMENTS	CMG	MB
25	6/19/14	FOR TOWN COMMENTS	CMG	MB
26	6/19/14	FOR TOWN COMMENTS	CMG	MB
27	6/19/14	FOR TOWN COMMENTS	CMG	MB
28	6/19/14	FOR TOWN COMMENTS	CMG	MB
29	6/19/14	FOR TOWN COMMENTS	CMG	MB
30	6/19/14	FOR TOWN COMMENTS	CMG	MB
31	6/19/14	FOR TOWN COMMENTS	CMG	MB
32	6/19/14	FOR TOWN COMMENTS	CMG	MB
33	6/19/14	FOR TOWN COMMENTS	CMG	MB
34	6/19/14	FOR TOWN COMMENTS	CMG	MB
35	6/19/14	FOR TOWN COMMENTS	CMG	MB
36	6/19/14	FOR TOWN COMMENTS	CMG	MB
37	6/19/14	FOR TOWN COMMENTS	CMG	MB
38	6/19/14	FOR TOWN COMMENTS	CMG	MB
39	6/19/14	FOR TOWN COMMENTS	CMG	MB
40	6/19/14	FOR TOWN COMMENTS	CMG	MB
41	6/19/14	FOR TOWN COMMENTS	CMG	MB
42	6/19/14	FOR TOWN COMMENTS	CMG	MB
43	6/19/14	FOR TOWN COMMENTS	CMG	MB
44	6/19/14	FOR TOWN COMMENTS	CMG	MB
45	6/19/14	FOR TOWN COMMENTS	CMG	MB
46	6/19/14	FOR TOWN COMMENTS	CMG	MB
47	6/19/14	FOR TOWN COMMENTS	CMG	MB
48	6/19/14	FOR TOWN COMMENTS	CMG	MB
49	6/19/14	FOR TOWN COMMENTS	CMG	MB
50	6/19/14	FOR TOWN COMMENTS	CMG	MB
51	6/19/14	FOR TOWN COMMENTS	CMG	MB
52	6/19/14	FOR TOWN COMMENTS	CMG	MB
53	6/19/14	FOR TOWN COMMENTS	CMG	MB
54	6/19/14	FOR TOWN COMMENTS	CMG	MB
55	6/19/14	FOR TOWN COMMENTS	CMG	MB
56	6/19/14	FOR TOWN COMMENTS	CMG	MB
57	6/19/14	FOR TOWN COMMENTS	CMG	MB
58	6/19/14	FOR TOWN COMMENTS	CMG	MB
59	6/19/14	FOR TOWN COMMENTS	CMG	MB
60	6/19/14	FOR TOWN COMMENTS	CMG	MB
61	6/19/14	FOR TOWN COMMENTS	CMG	MB
62	6/19/14	FOR TOWN COMMENTS	CMG	MB
63	6/19/14	FOR TOWN COMMENTS	CMG	MB
64	6/19/14	FOR TOWN COMMENTS	CMG	MB
65	6/19/14	FOR TOWN COMMENTS	CMG	MB
66	6/19/14	FOR TOWN COMMENTS	CMG	MB
67	6/19/14	FOR TOWN COMMENTS	CMG	MB
68	6/19/14	FOR TOWN COMMENTS	CMG	MB
69	6/19/14	FOR TOWN COMMENTS	CMG	MB
70	6/19/14	FOR TOWN COMMENTS	CMG	MB
71	6/19/14	FOR TOWN COMMENTS	CMG	MB
72	6/19/14	FOR TOWN COMMENTS	CMG	MB
73	6/19/14	FOR TOWN COMMENTS	CMG	MB
74	6/19/14	FOR TOWN COMMENTS	CMG	MB
75	6/19/14	FOR TOWN COMMENTS	CMG	MB
76	6/19/14	FOR TOWN COMMENTS	CMG	MB
77	6/19/14	FOR TOWN COMMENTS	CMG	MB
78	6/19/14	FOR TOWN COMMENTS	CMG	MB
79	6/19/14	FOR TOWN COMMENTS	CMG	MB
80	6/19/14	FOR TOWN COMMENTS	CMG	MB
81	6/19/14	FOR TOWN COMMENTS	CMG	MB
82	6/19/14	FOR TOWN COMMENTS	CMG	MB
83	6/19/14	FOR TOWN COMMENTS	CMG	MB
84	6/19/14	FOR TOWN COMMENTS	CMG	MB
85	6/19/14	FOR TOWN COMMENTS	CMG	MB
86	6/19/14	FOR TOWN COMMENTS	CMG	MB
87	6/19/14	FOR TOWN COMMENTS	CMG	MB
88	6/19/14	FOR TOWN COMMENTS	CMG	MB
89	6/19/14	FOR TOWN COMMENTS	CMG	MB
90	6/19/14	FOR TOWN COMMENTS	CMG	MB
91	6/19/14	FOR TOWN COMMENTS	CMG	MB
92	6/19/14	FOR TOWN COMMENTS	CMG	MB
93	6/19/14	FOR TOWN COMMENTS	CMG	MB
94	6/19/14	FOR TOWN COMMENTS	CMG	MB
95	6/19/14	FOR TOWN COMMENTS	CMG	MB
96	6/19/14	FOR TOWN COMMENTS	CMG	MB
97	6/19/14	FOR TOWN COMMENTS	CMG	MB
98	6/19/14	FOR TOWN COMMENTS	CMG	MB
99	6/19/14	FOR TOWN COMMENTS	CMG	MB
100	6/19/14	FOR TOWN COMMENTS	CMG	MB

**Silo Ridge Resort Community**  
 4651 Route 22  
 Amenia, New York  
 Project Title  
**Site Plan - Phase 1**

Not Issued for Construction  
 Drawing Title  
**Grading and Drainage Plan 8**

Drawing Number  
**C7.08**  
 Sheet 56 of 56  
 Project Number  
 29011.00

29011.00-PT-05.DWG





Village Green Plan

**OWNER:**  
Silo Ridge Ventures, LLC  
5021 Route 44  
Amenia, New York 12501  
845.373.8020

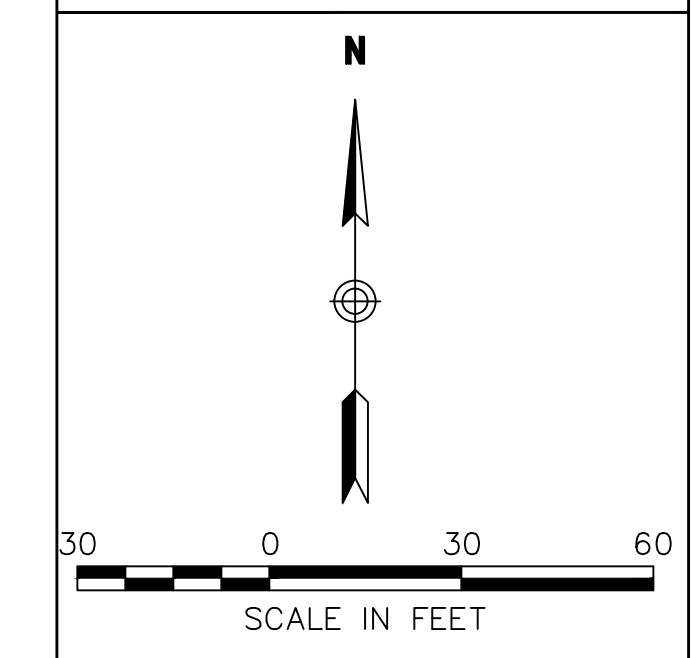
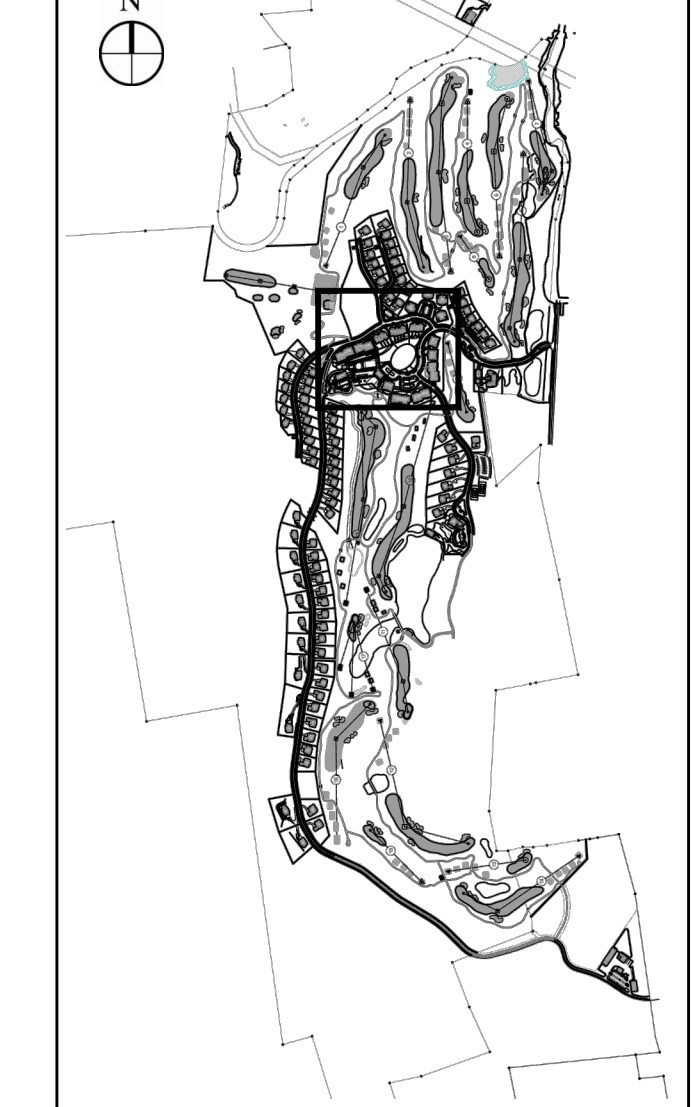
**ARCHITECTS, PLANNERS, LANDSCAPE ARCHITECTS:**  
**HART HOWERTON**  
10 East 40th Street, New York, NY 10016  
Tel: 212.683.5631 Fax: 212.481.3768  
E-mail: NY@harthowerton.com

**GOLF COURSE DESIGNERS:**  
**FAZIO DESIGN**  
401 N. Main St., Ste. 400  
Hendersonville, North Carolina 28792  
828.693.0052 • FAX 828.693.0071

**ENVIRONMENTAL PLANNING & CIVIL ENGINEERING:**  
**VHB**  
**Engineering, Surveying & Landscape Architecture, PC**  
Planning  
Transportation  
Land Development  
Environmental Services  
50 Main Street, Suite 360  
White Plains, New York 10606  
914.467.6600 • FAX 914.761.3759

**WASTEWATER AND WATER DESIGN:**  
**CEDARWOOD ENGINEERING SERVICES, PLLC**  
CIVIL & ENVIRONMENTAL ENGINEERING  
8-12 Dietz St., Suite 303  
Oswego, NY 10725  
248 Main St., PO Box 203  
North Creek, NY 518.251.5160

**PROJECT SURVEYOR:**  
**Kirk K. Horton, Land Surveyor**  
NYS License No. 049954  
9 Broadway  
Amenia, New York 12501  
845.373.7809



NO.	DESCRIPTION	DATE	BY
2	PER TOWN COMMENTS	8/17/14	ADB
1	PER TOWN COMMENTS	6/19/14	ADB
1	REVISION	03/03/14	ADB

Designed by **JC** Drawn by **CMG** Checked by **MWJ**  
 CAD checked by **MB** Approved by **ACC**  
 Date: As Shown Date: March 3, 2014

**Silo Ridge Resort Community**  
4651 Route 22  
Amenia, New York  
Site Plan - Phase 1

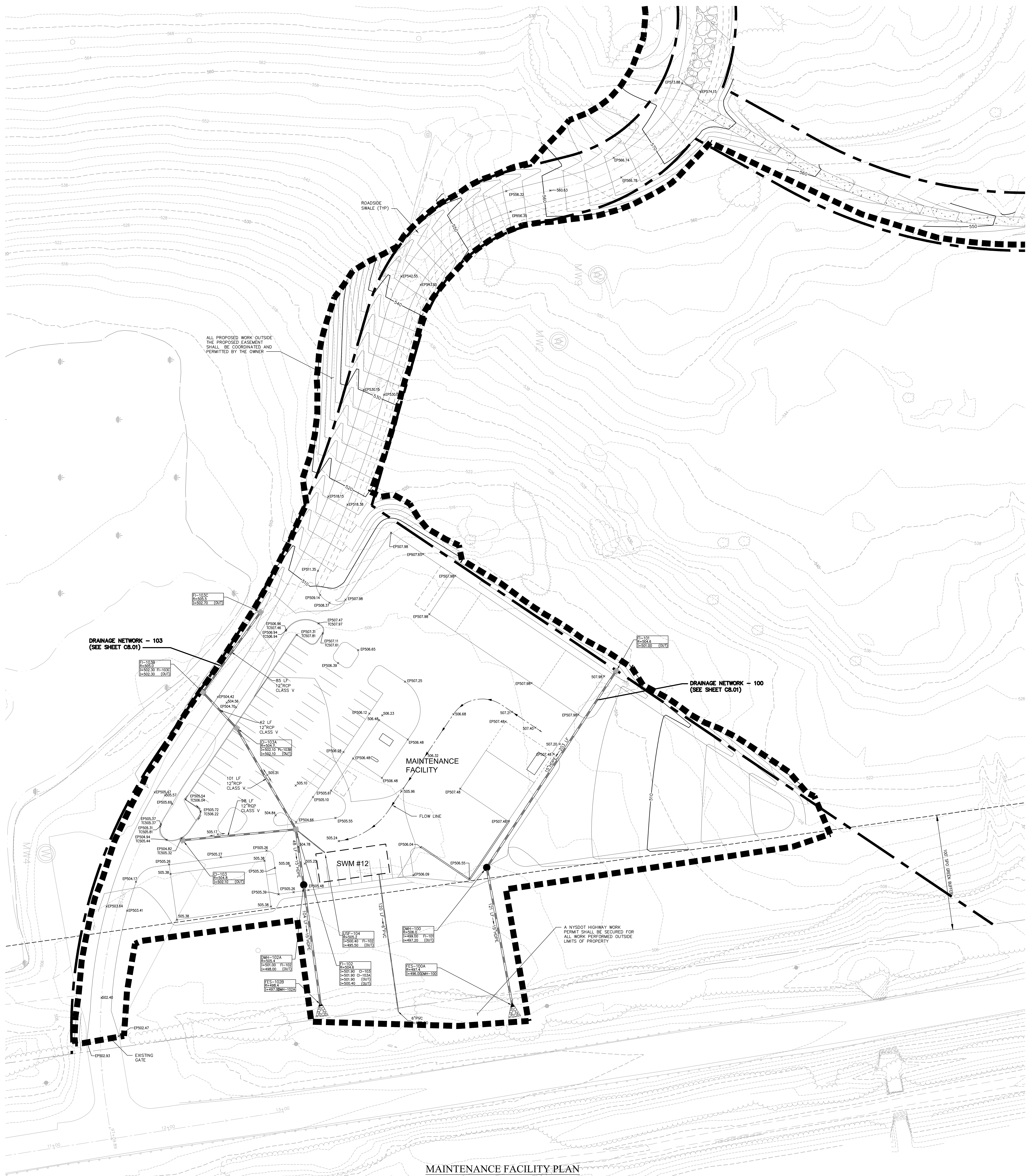
Not Issued for Construction  
Drawing Title  
**Grading and Drainage Plan 9**

Sheet Number  
**C7.09**  
Sheet 57  
Project Number  
29011.00









**OWNER:**  
Silo Ridge Ventures, LLC  
5021 Route 44  
Amenia, New York 12501  
845.373.8020

**ARCHITECTS, PLANNERS, LANDSCAPE ARCHITECTS:**  
**HART | HOWERTON**  
10 East 40th Street New York, NY 10016  
Tel: 212.683.5631 Fax: 212.481.3768  
E-mail: NY@hart-howerton.com

**GOLF COURSE DESIGNERS:**  
**FAZIO DESIGN**  
401 N. Main St., Ste. 400  
Hendersonville, North Carolina 28792  
828.693.0052 • FAX 828.693.0071

**ENVIRONMENTAL PLANNING & CIVIL ENGINEERING:**  
**VHB**  
**Engineering, Surveying & Landscape Architecture, PC**  
Planning  
Transportation  
Land Development  
Environmental Services  
50 Main Street, Suite 360  
White Plains, New York 10606  
914.467.6600 • FAX 914.761.3759

**WASTEWATER AND WATER DESIGN:**  
**CEDARWOOD ENGINEERING SERVICES, PLLC**  
CIVIL & ENVIRONMENTAL ENGINEERING  
8-12 Dietz St., Suite 303  
Oswego, NY 14757-4233-3073  
248 Main St., PO Box 203  
North Creek, NY 518.251.5160

**PROJECT SURVEYOR:**  
**Kirk K. Horton, Land Surveyor**  
NYS License No. 049954  
9 Broadway  
Amenia, New York 12501  
845.373.7809

**KEY MAP:**  
[Key Map showing site location]

**SCALE IN FEET**  
0 30 60

1	PER TOWN COMMENTS	6/19/14	ACD
	Revision	Date	Prep'd

Designed by **JC** Drawn by **CMG** Checked by **MWJ**  
CAD checked by **MB** Approved by **ACD**  
Date: As Shown Date: March 3, 2014

**Silo Ridge Resort Community**  
4651 Route 22  
Amenia, New York

Issued for:  
**Site Plan - Phase 1**

Not Issued for Construction

**Grading and Drainage Plan 11**

Drawing Number  
**C7.11**  
Sheet 59 of  
Project Number  
29011.00

29011.00-PT\_00.dwg