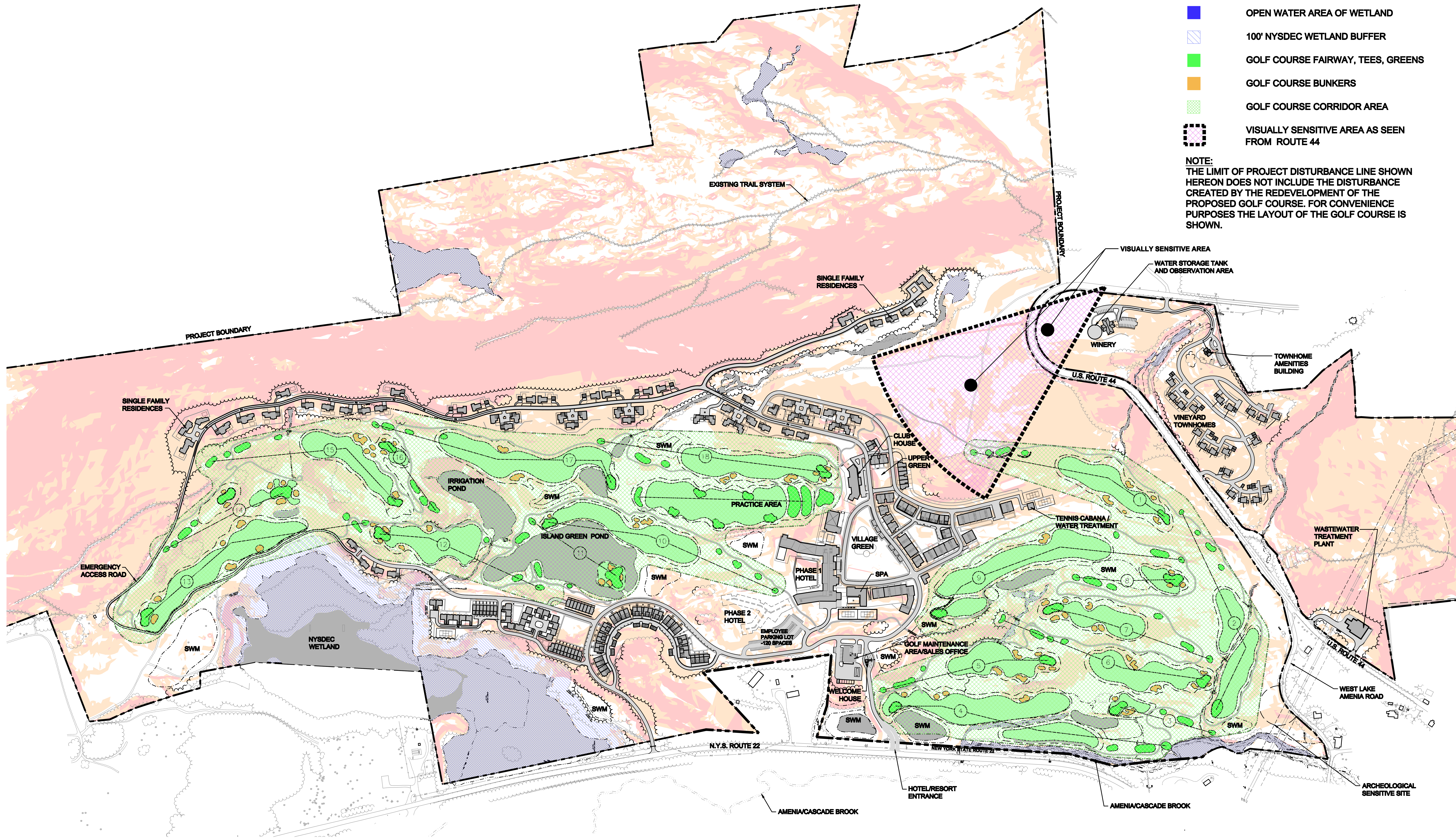


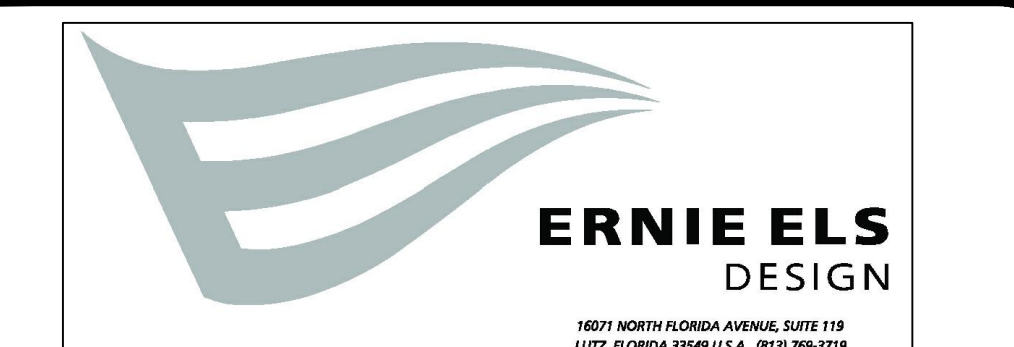
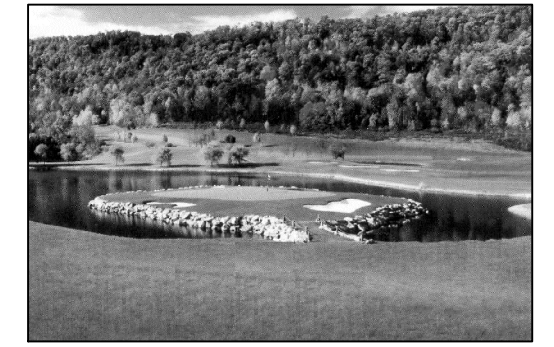
DRAWING LEGEND

- AREAS OF SLOPES =>30%
- AREAS OF SLOPES =15-30%
- WETLAND AREA
- OPEN WATER AREA OF WETLAND
- 100' NYSDEC WETLAND BUFFER
- GOLF COURSE FAIRWAY, TEES, GREENS
- GOLF COURSE BUNKERS
- GOLF COURSE CORRIDOR AREA
- VISUALLY SENSITIVE AREA AS SEEN FROM ROUTE 44

NOTE:
THE LIMIT OF PROJECT DISTURBANCE LINE SHOWN HEREON DOES NOT INCLUDE THE DISTURBANCE CREATED BY THE REDEVELOPMENT OF THE PROPOSED GOLF COURSE. FOR CONVENIENCE PURPOSES THE LAYOUT OF THE GOLF COURSE IS SHOWN.



**Silo Ridge
Resort Community**



**ROBERT A.M.
STERN
ARCHITECTS**

ALL RIGHTS RESERVED. COPY OR REPRODUCTION OF THIS PLAN OR ANY PORTION THEREOF IS PROHIBITED WITHOUT THE WRITTEN PERMISSION OF THE DESIGN ENGINEER, SURVEYOR, OR ARCHITECT. ALTERATION OF THIS DRAWING, EXCEPT BY A LICENSED P.E. OR E.C.S., IS UNLAWFUL. ANY ALTERATION BY A P.E. MUST BE INDICATED AND BEAR THE APPROPRIATE SEAL, SIGNATURE AND DATE OF ALTERATION.

0 1 2 3
ORIGINAL SCALE IN INCHES

**THE
Chazen
COMPANIES**
Engineers/Surveyors
Planners
Environmental Scientists

**CHAZEN ENGINEERING, LAND SURVEYING
& LANDSCAPE ARCHITECTURE CO., P.C.**

Dutchess County Office: 27 Fox Street, Poughkeepsie, New York 12601 Phone: (845) 434-3388
Capital District Office: 216 Westerlo Avenue, Newburgh, New York 12550 Phone: (845) 273-0050
Orange County Office: 126 West 10th Street, Newburgh, New York 12550 Phone: (845) 273-1133
North County Office: 125 Oak Street, Chenango Falls, New York 13030 Phone: (607) 872-0010

REV.	DATE	REVISION	DESCRIPTION
1	2/7/08	REVISED MAP SUBMISSION	
2			
3			

**SILLO RIDGE RESORT COMMUNITY
TRADITIONAL NEIGHBORHOOD ALTERNATIVE**

**ENVIRONMENTAL CONSTRAINTS MAP
MASTER DEVELOPMENT PLAN**

TOWN OF AMENIA, DUTCHESS COUNTY, NEW YORK

Drawn: CJB checked: PIV/JAR
Date: 12/7/07 scale: 1"=200'
Project No: 10454.02
Sheet No: SP13
17 OF 17